

Green Schoolyards: Local Urban Transformation to National Prototype

Speakers

- Adrian Benepe, FASLA, The Trust for Public Land
 - Jennifer Nitzky, ASLA, Studio HIP
- Danielle Denk, ASLA, The Trust for Public Land

ASLA
SAN2019

Conference on
Landscape Architecture
November 15-18
San Diego



#ASLA2019

Learning Objectives

- **Learning Objective # 1** - Understand the **broad scale of urban schoolyards**, the **complex patterns of ownership and authority**, and the varied **approaches to transforming blank schoolyards into green schoolyards**.
- **Learning Objective # 2** - Learn how **joint-use agreements** are created by cities and expanded by non-profits.
- **Learning Objective # 3-Experience** - the results of a **20-year partnership in New York that created over 200 green schoolyards**, and a complex partnership between 3 government agencies and a non-profit in Philadelphia.
- **Learning Objective # 4-** Understand how green schoolyard transformations are an important strategy for ensuring that all US city residents have a **high-quality park within a 10-minute walk**.

Definition

Green Schoolyards are open to the community after school hours and are designed by the school and surrounding neighborhood as nature-rich hubs for community health and climate resilience.



Context

The Green Schoolyards movement is taking hold **across the world** as a recognized **solution** to address climate, equity, health **challenges facing the 21st century**. In the US we are working with multiple **school districts** in various cities to advance **Green Schoolyards**.



Core Insight

- **HEALTH** - Children spend an increasing amount of time on screens disconnected from nature and physical activity. This is resulting in depression, anxiety and increased rates of obesity.
- **EQUITY** –Legacy inequities in income, health and educational outcomes perpetuate the cycle of poverty in many underserved urban communities. Past decisions have led to disparities in opportunities.
- **CLIMATE** - Climate change is accelerating, exacerbating urban heat islands, felt most significantly by vulnerable urban populations. With more severe storms, our aging urban infrastructure is not able to handle the runoff, causing combined sewer overflows, polluting our creeks and rivers. With fewer rainfalls communities are experiencing drought.

Vision

Green schoolyards become the **standard practice across the country**, serving as a hub for **climate** resiliency, improved **health** and education, and **equitable community empowerment**.



TPL Green Schoolyard Impact to date



EM Stanton School, Philadelphia

- Created over 250 green schoolyards
- Created 10 green schoolyard programs and pilots across the country
- Developed best practices for green schoolyard development
- Developed an archive of Green Schoolyard resources
- Connected more than 4 million people within a 10-minute walk of a green schoolyard

Allied Organizations are also making a significant impact on the Movement, including:

- Green Schoolyards America
- Children and Nature Network
- Many other local organizations

A shared vision alone is not enough

- School districts can enter into legal contracts to officiate agreements, such as:
 - Opening the schoolyard to the public after school hours
 - Outlining who will be responsible for the design contracts
 - Outlining who will be responsible for the construction contracts
 - Outlining who will be responsible for long term maintenance
 - Outlining responsibility for long term liability
- Contract types to consider:
 - Joint Use Agreements
 - Cooperative Agreements
 - Property Easements



Multiple stakeholders:



William Dick School, Philadelphia

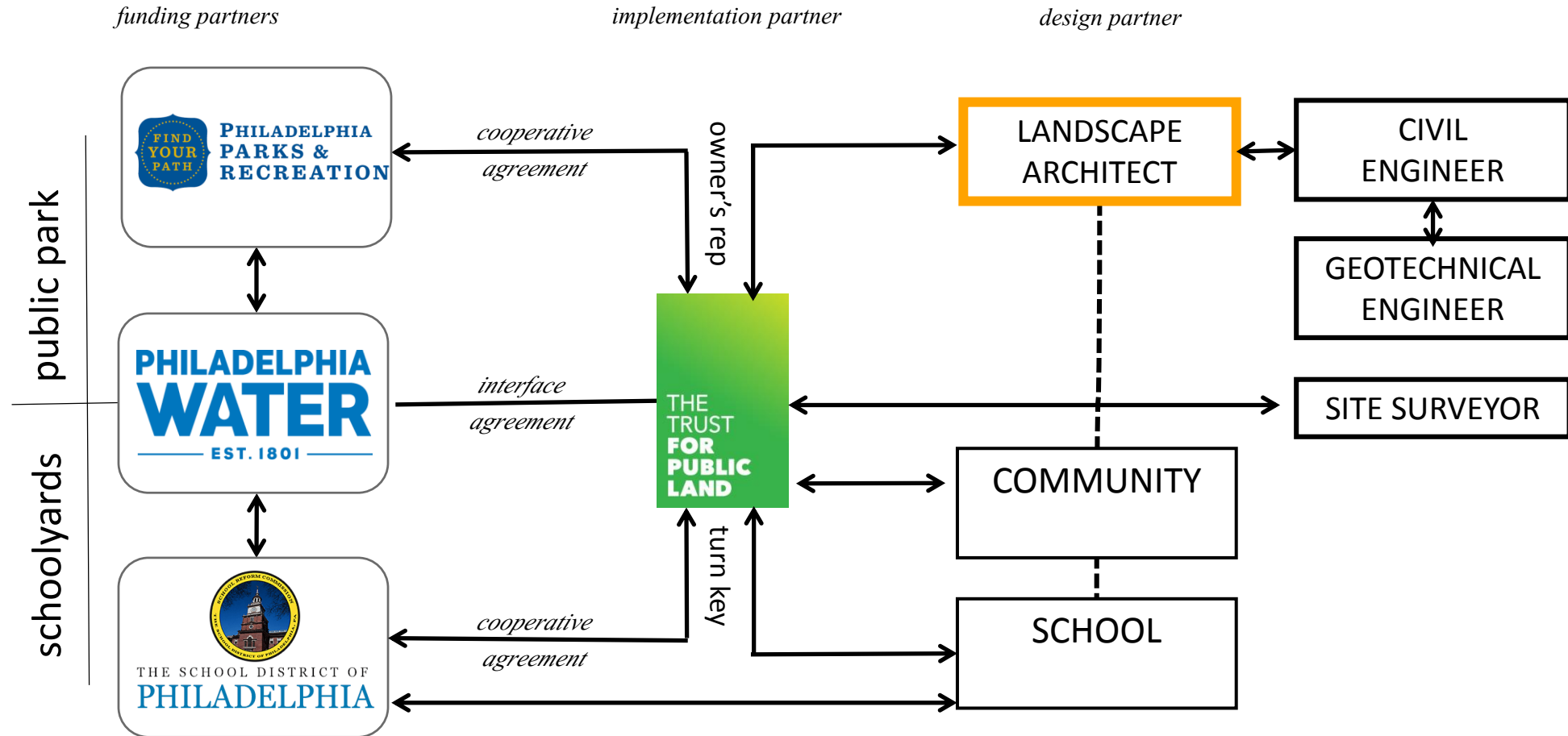
Capital Team

- Agency partners
- **Non-profit partners**
- Public Funders
- School District Administrators
- Permitting Agencies
- Landscape Architects
- Design Sub-consultants

Use and stewardship Team (Experts) -

- **Non-profit partner**
- School leadership / Principals
- Teachers
- School staff, especially custodians
- Students
- Parents
- Community Leaders
- Local Businesses
- Neighbors
- Out of School Time providers

Public-private Partnership Structure



Stewardship

- **Start Early!** Put Community needs and ideas at the center of design.
- **Plan Ahead!** Develop a stewardship plan early in the project development.
- **Stay Active!** help teachers, students, custodians and community members take care of and activate their schoolyard.
 - lead teacher trainings
 - Provide green infrastructure lessons,
 - Organize gardening days
 - Host tree-care workshops
 - Provide teaching materials
 - Provide stewardship grants
 - Support community-based programming after school hours.
- **Stewardship is essential to success!**





Precedent

“The best means of benefiting the community is to place within its reach the ladders upon which the aspiring can rise.”

Andrew Carnegie, 1898



Green Schoolyards for all



Private schoolyard



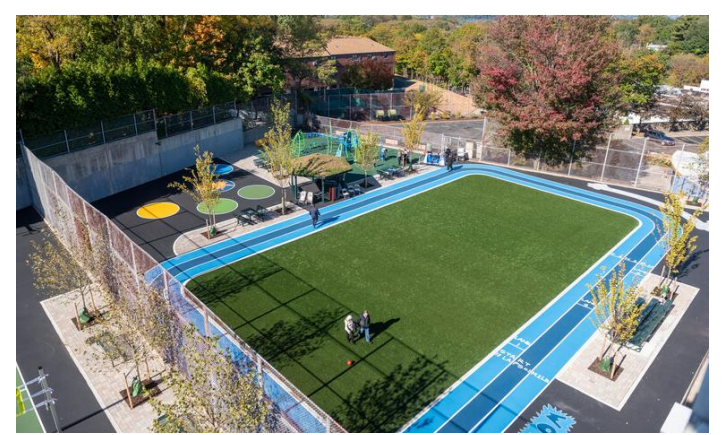
John Taggart School, Philadelphia

Public schoolyard

In the words of Carnegie, what is within reach to whom?

Green Schoolyards *are today's* Carnegie Library







100% PROMISE

IMPROVING ACCESS TO
10 MINUTE WALK
PARKS * GREEN SPACES



1

2000: At TPL “Millennial Gathering,” CEO Will Rogers puts forward a vision that in the future, everyone will have a **“10-minute stroller ride” to a nearby park**

2

2007: Based on TPL schoolyard-to-playgrounds model, NYC mayor makes a 10-minute walk to a park the **centerpiece of NYC’s PlaNYC** sustainable development plan

3

2012: TPL launches **first ParkScore assessment** of 40 largest cities in US: 10-minute walk access is a key metric in ranking/comparing city park systems

4

2014: TPL field offices adopt 10-minute walk as key project metric

5

2017: TPL, NRPA, and ULI launch the **10-Minute Walk to a Park Campaign**, a nationwide movement to improve access to parks & green spaces

6

2018-2019: TPL creates **100% Promise**, asking U.S. Mayors to adopt 100% park access by 2050

7

2020-2025: **Schoolyards, Parks, Trails, and Lands** Initiatives make significant progress towards achieving the 10-Minute Walk Vision, deploying TPL expertise and tools in service of communities.

MUCH OF TPL'S WORK FORWARDS THE 10MW VISION



- TPL is leading a national policy movement on the power of parks to address urban and social challenges. 300+ mayors have committed to expanding parks & greenspace, and we're helping them meet these commitments.

- The 10 Minute Walk Mayors Campaign is built on the idea that TPL cannot transform cities alone.
- We engage *external* policymakers and their influencers to create the environments for urban parks to flourish – with a call to action to adopt *100% 10-minute walk park access by 2050*.

- The 10-Minute Walk Campaign is a partnership that works with local civic leaders to improve park access and quality in cities, through three areas of work:
 1. A national call to action for mayors to commit to the 100% Promise.
 2. Building a coalition among local leaders, NGOs, and institutions for influence and for technical support.
 3. Delivering technical work in parks planning, policy, and funding for high-need cities via the resources of TPL and its current partners.
- An ask that cities enable and inspire action to ensure that 100% of U.S. residents have easy access to a quality park or green space by 2050.



CASE STUDY

An aerial photograph of a modern playground. The ground is covered in large, colorful murals of various shapes and patterns, including a large heart, a sun, and a flower. People are seen playing on the equipment and walking around the area. The playground is surrounded by trees and a fence. In the background, there are parked cars and buildings.

NYC Playground Program

**The Art of Collaboration: Bringing
Landscape Architecture into the Classroom**

Jennifer Nitzky, RLA, ASLA
StudioHIP

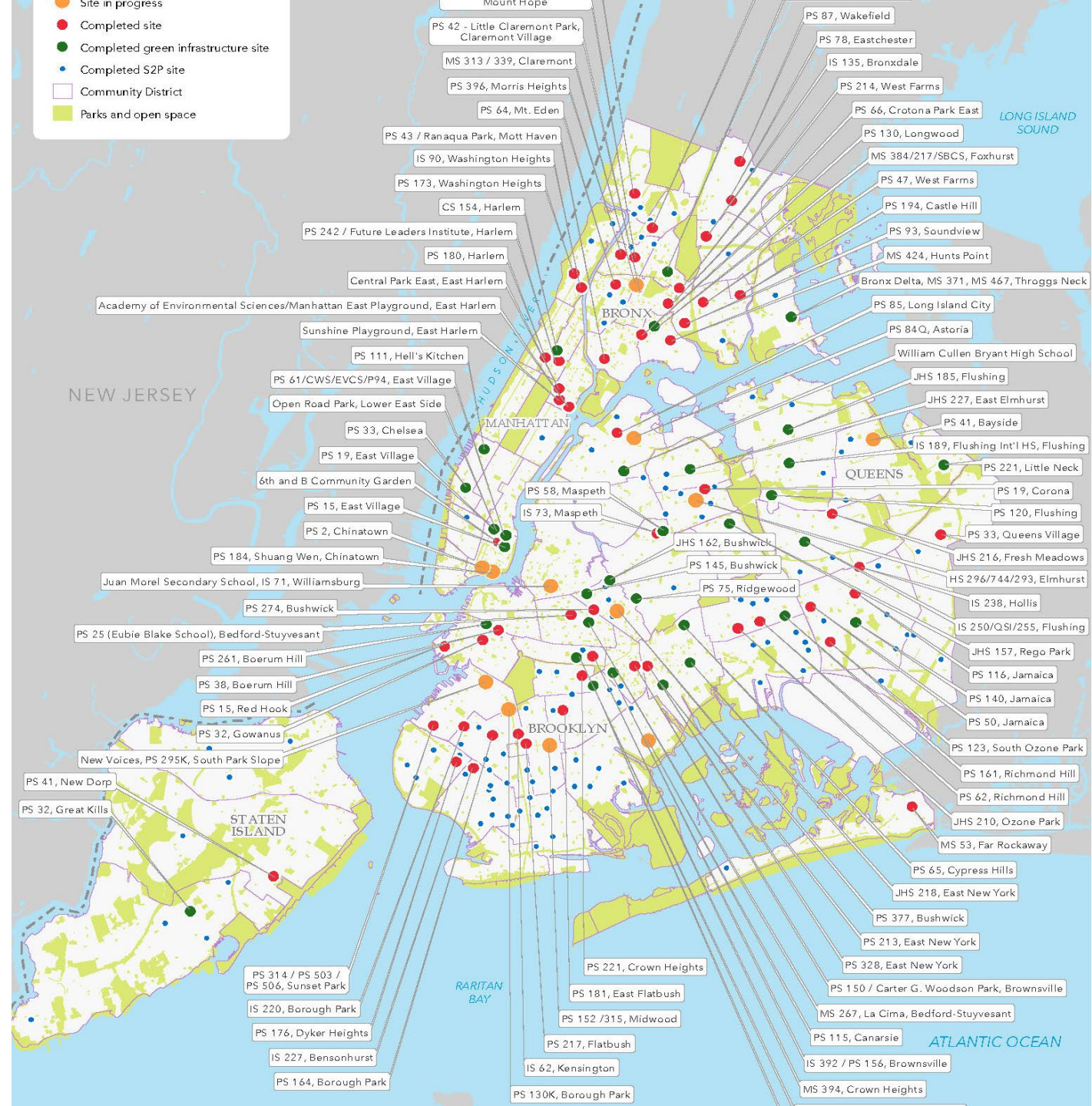
Green Schoolyard Case Study - NYC

Over 20 Years of Collaboration and 200+ Green Playgrounds Built



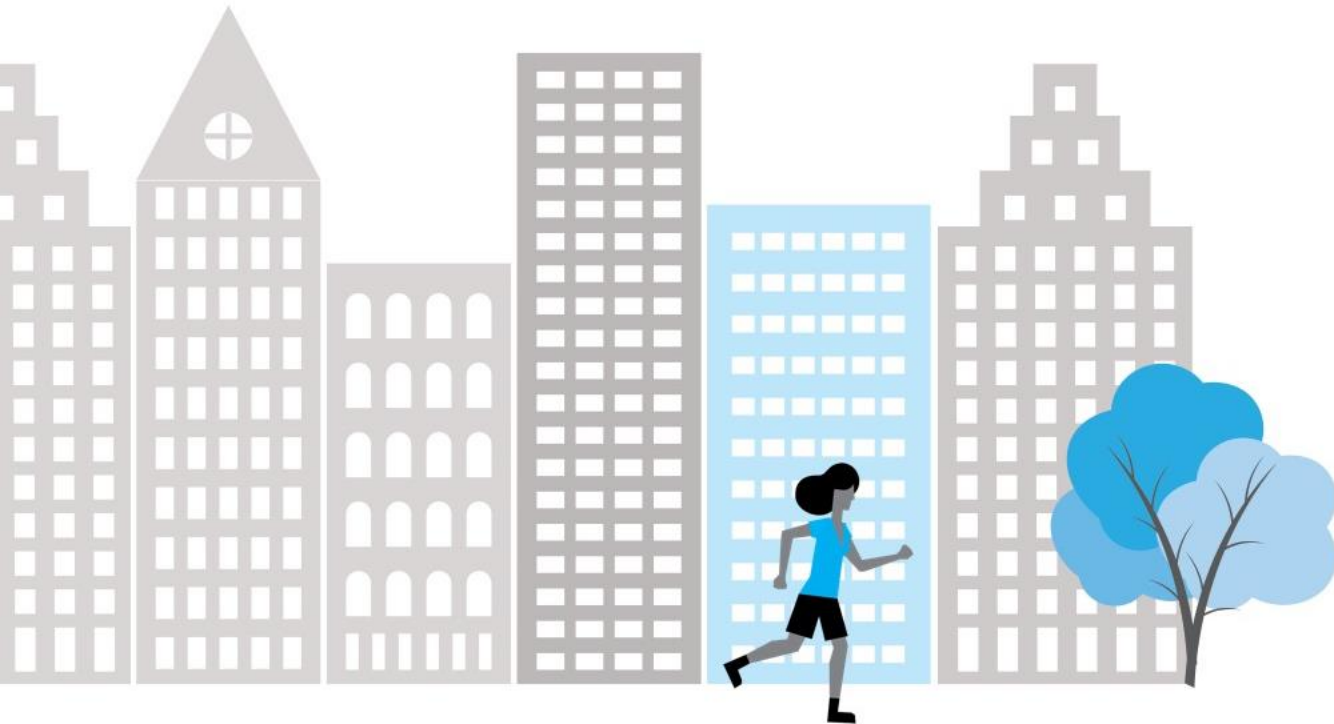
NYC Playgrounds Program

More than 200 Schoolyards in progress or completed in all five boroughs



NYC Playgrounds by the Numbers

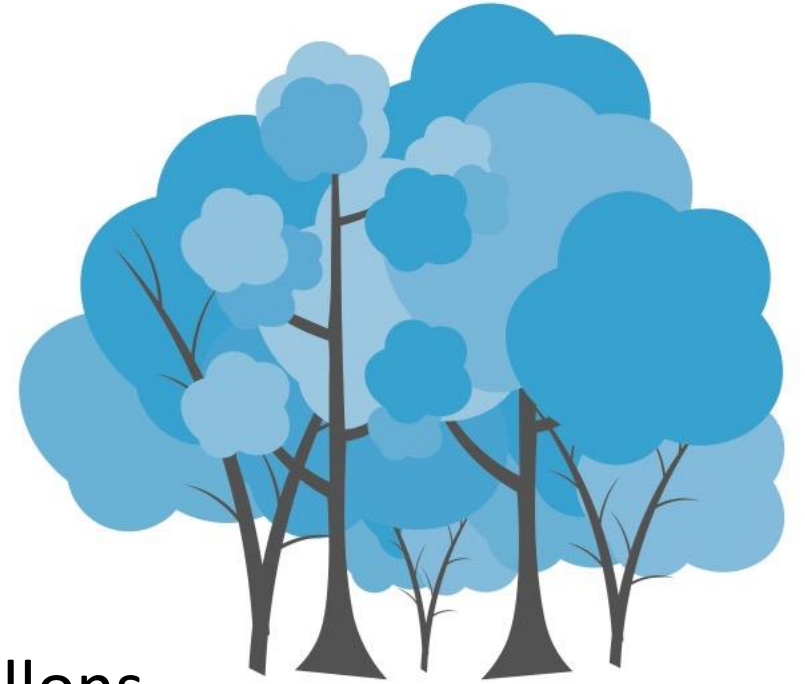
Since 1996 The NYC
Playgrounds Program Has:



Placed **4,000,000+** New Yorkers
within a **10-minute walk** of a
playground.

NYC Playgrounds by the Numbers

Planted over **3,600** Trees



Captured **19,000,000** gallons
of stormwater annually



Involved over **6,800** students
in the design process



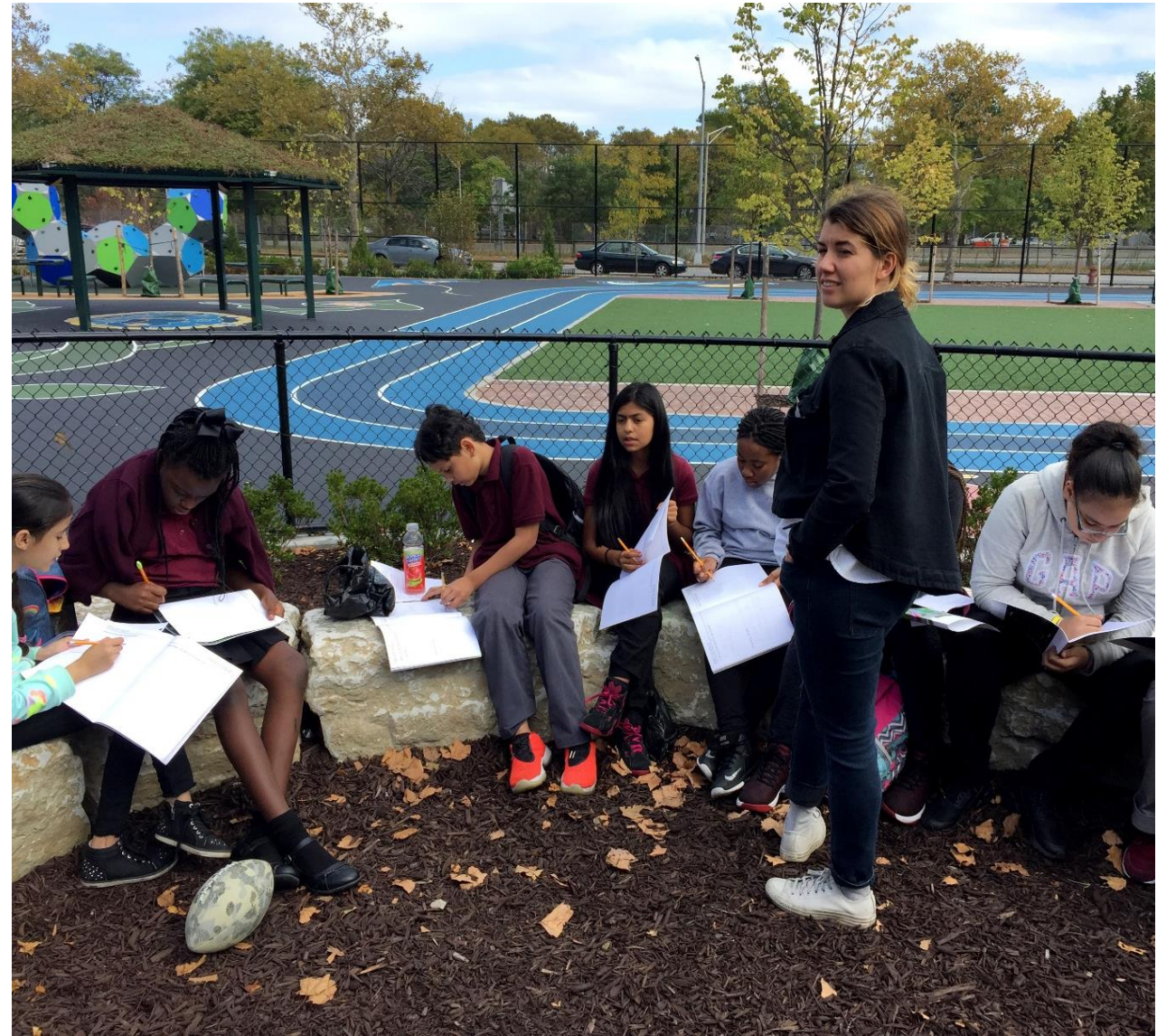
Green Schoolyard Case Study - NYC

Engaging Students to become the Designers



Green Schoolyard Case Study - NYC

Site visit to a completed project



Green Schoolyard Case Study - NYC

Sewer in a Suitcase – Lesson on Stormwater Management



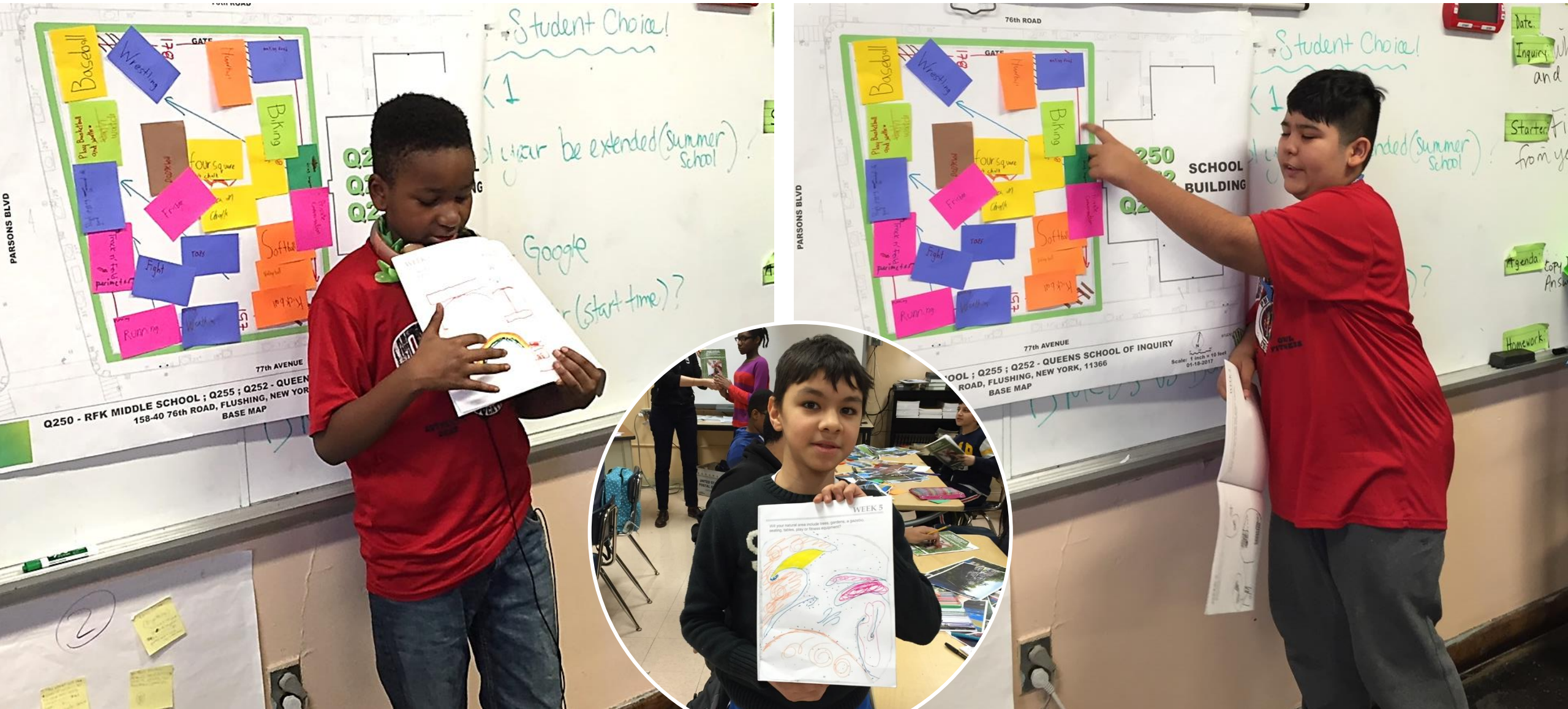
Green Schoolyard Case Study - NYC

Conceptualizing the playground



Green Schoolyard Case Study - NYC

Conceptualizing the playground



Green Schoolyard Case Study - NYC

Students collaborate to make design decisions



Green Schoolyard Case Study - NYC

Greening every square inch!





Green Schoolyard Case Study - NYC

Creating Stormwater Capture



Student designed artwork -
an integral part of
playgrounds



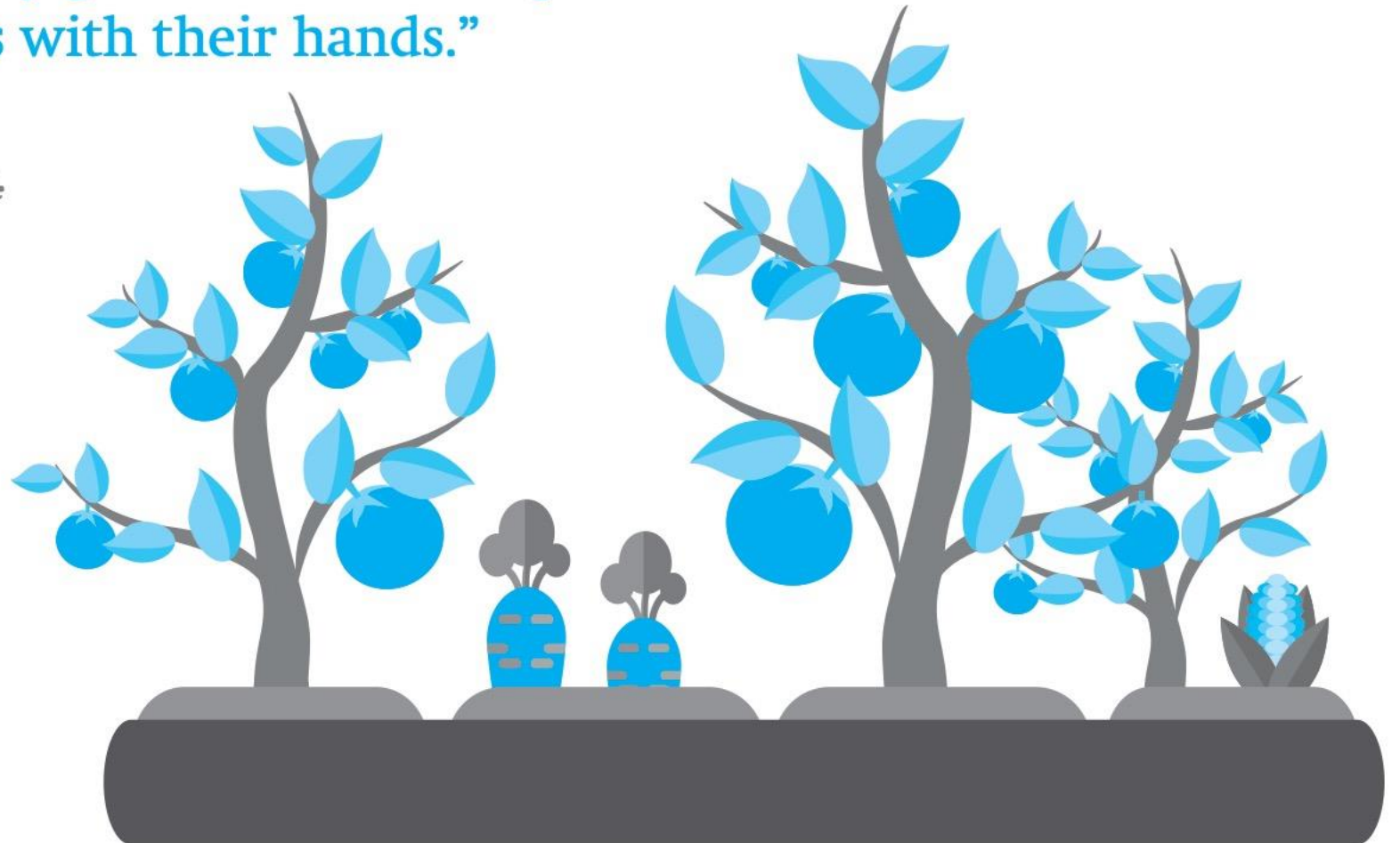
Green Schoolyard Case Study - NYC

Building Future Stewards Today



“Every year, we have a Gardening Club. Students, who usually live in cramped apartments, get an opportunity to work outdoors, with their hands, planting, weeding, pruning and mulching. They get to learn about plant life and love working outdoors with their hands.”

BILL DOBRANSKI,
PROGRAM DIRECTOR AT IS 73Q.



Green Schoolyard Case Study - NYC

Creating Greener, Healthier, Happier Communities





PS 581 – Brooklyn, Before Construction



PS 581 – Brooklyn, After Construction

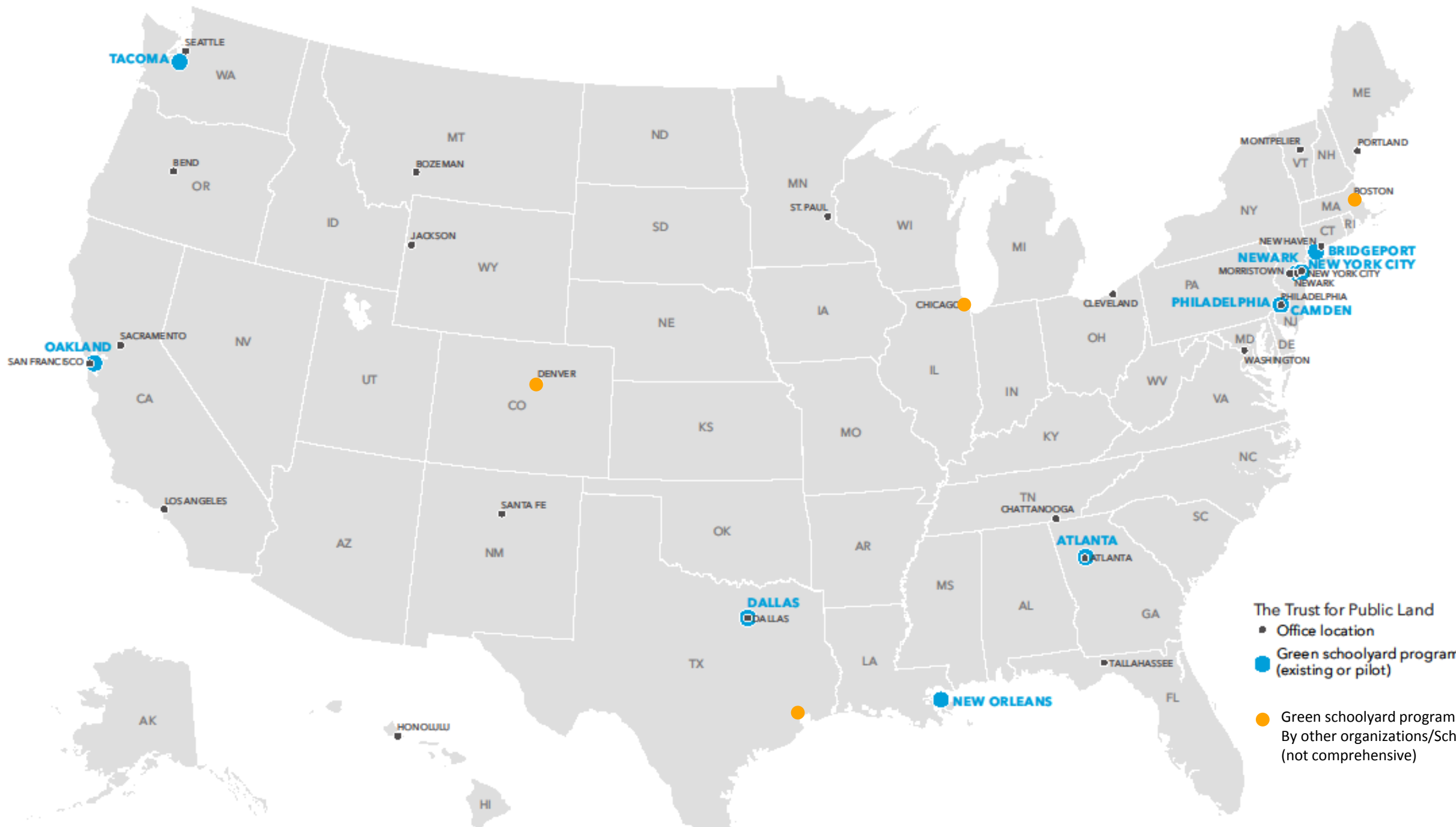
Green Schoolyard Case Study - NYC

Challenges and Lessons Learned:

- Budget
- Underground limitations to green infrastructure
- Accommodating “something for everyone” in small spaces
- Working with Contractors
- Maintenance – working with the custodians



SCALE



Newark, NJ

- Over 25 years, the Newark Green, Healthy Schoolyards Program has worked with eight school communities on nine projects.
- The multiple benefits of Green, Healthy Schoolyards has been brought to 5,000 students and 95,000 residents in the City of Newark.



Philadelphia, PA

- 8 year PPP with the School District of Philadelphia, the Philadelphia Water Department and sometimes Mural Arts Philadelphia.
- Our 16 completed and pipeline projects will:
 - Connect 200,000 people to quality park within a 10-minute walk
 - Manage 20 million gallons of stormwater annually.
 - Provide localized cooling and increased tree canopy
 - Expand environmental education



Philadelphia, PA

- Heavy rain storms create runoff that overburden infrastructure causing combined sewer overflows in the rivers.
- We create rain gardens in schoolyards that manage Stormwater and double as nature learning centers.
- As green infrastructure, these gardens have obligatory maintenance requirements, as such they remain green and inspiring for students and the community.



Oakland, CA

- Partnership with Oakland Unified School District and Green Schoolyards America to transform asphalt schoolyards serving disadvantaged communities
- We will accomplish the following goals over the next 3 years:
 - Build pilot projects
 - Support Joint Use
 - Develop policy and guidelines
 - Professional development
 - Develop sustainable funding



Camden, NJ

- Camden is one of the poorest cities in America and **social and environmental justice motivate our work in Camden.**
- Certain neighborhoods flood with diluted sewage during heavy rainfall.
- Our Parks for People Camden program works 360 degrees to address climate and health discrepancies through the co-creation of Green Schoolyards and other public spaces.



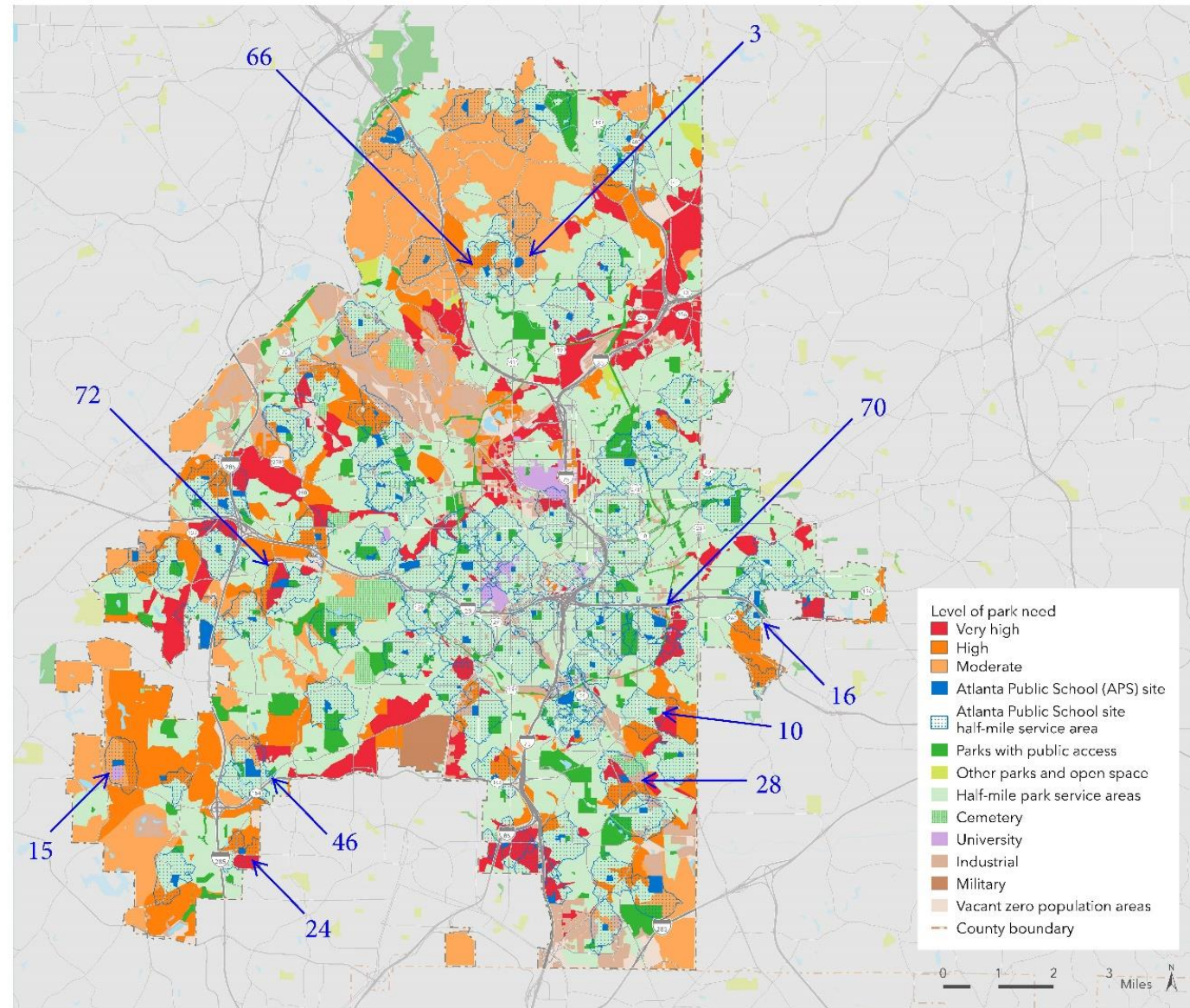
New Orleans, LA

- We created a pilot Green Schoolyard in New Orleans at the Paul Habans Charter.
- Before the redesign, any rainstorm would inundate their concrete playground and flood the property so kids had to stay inside during recess, now native plants and vegetation in its rain gardens collect rainfall and reduce water run-off.



Atlanta, GA

- 29% of residents do not live within a 10-minute walk of a park. Over the course of three years we will help close the gap by transforming 10 Atlanta Schoolyards.
- The Trust for Public Land has partnered with Atlanta Public Schools, Urban Land Institute Atlanta, and Park Pride to improve schoolyards and make them accessible to the public when schools are closed.



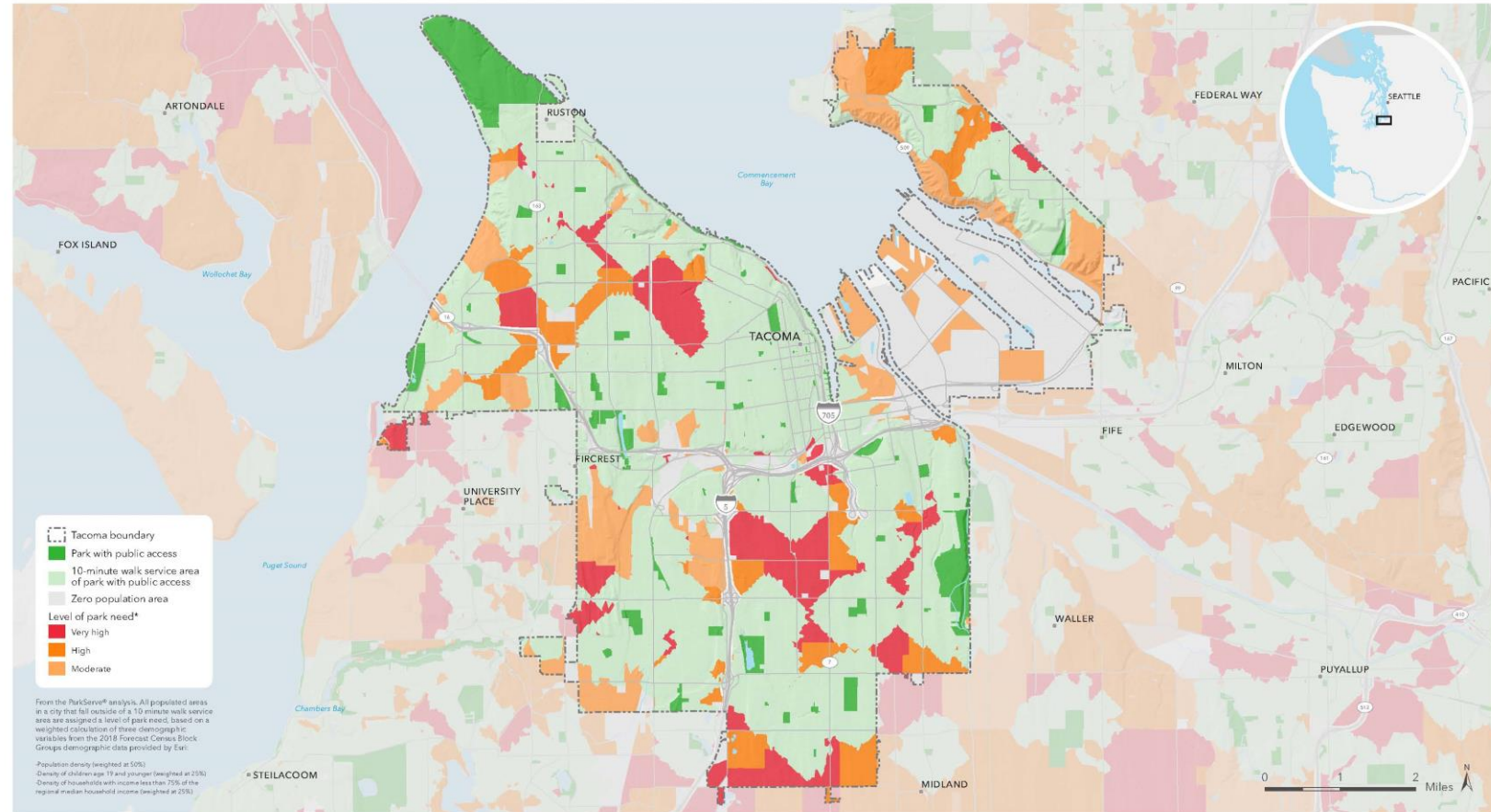
Dallas, TX

- The Texas Trees Foundation (TTF) and The Trust for Public Land (TPL) partnered with Dallas ISD and the Dallas Park and Recreation Department to combine two very successful initiatives; TTF's Cool School Program and TPL's mission to bring a park within a 10-minute walk of every Dallas resident into an innovative initiative called "Cool Schools Community Parks."
- Texas Trees Foundation and The Trust for Public Land have secured an \$6.1 million in philanthropic support to complete 20 school-parks by 2022.



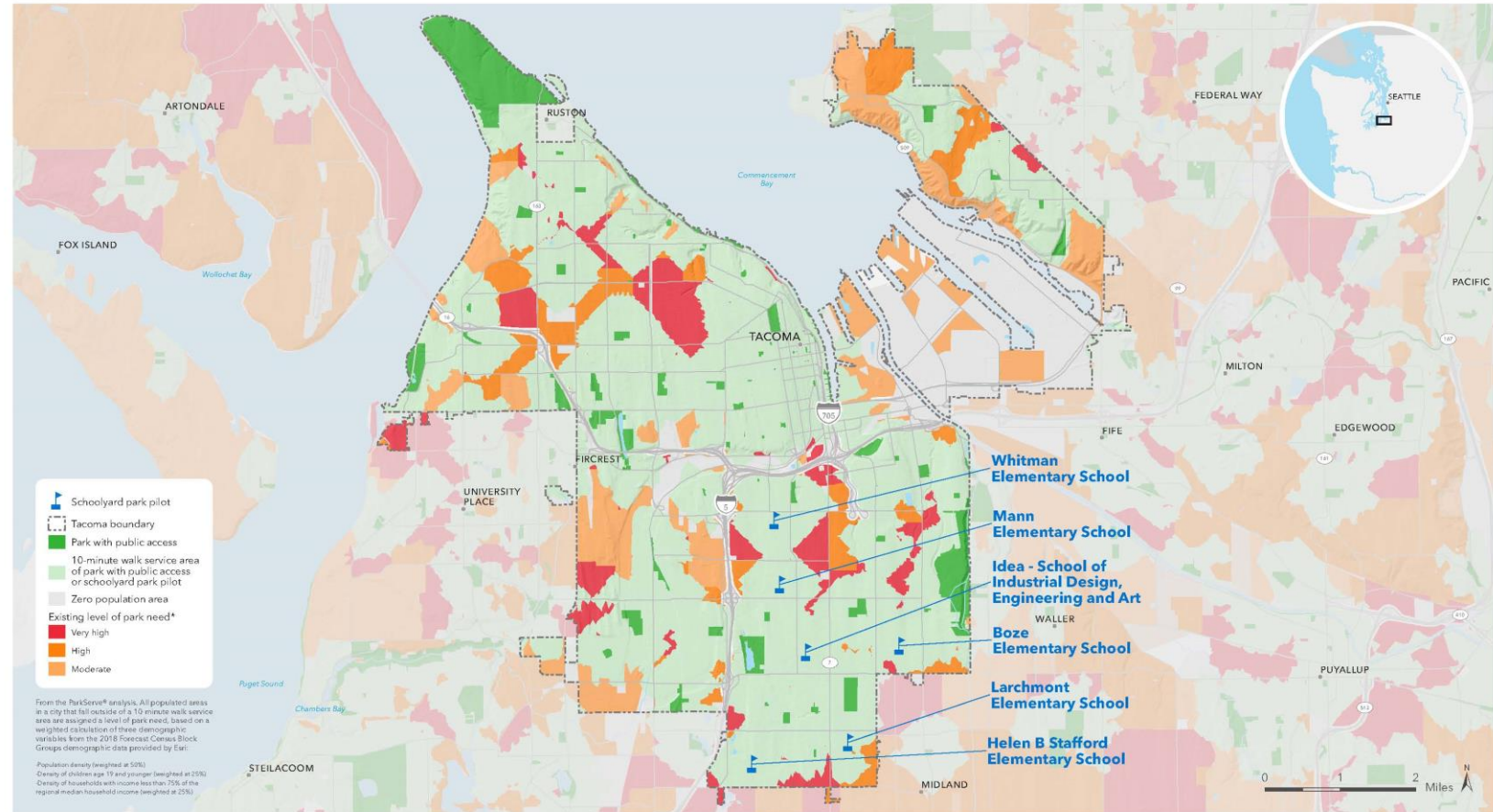
Tacoma, WA

- Tacoma is the city in Washington with the greatest number of residents who **lack access to parks** near their homes.
- Our pilot program will create six green schoolyards over a three-year period.



Tacoma, WA

- In partnership with **Seattle Children's Hospital** and the **University of Washington**, we will study the impact green schoolyards have on **community health, academic performance, and social cohesion.**



Many more organizations are working hard to advance Green Schoolyards



In the next 5 years TPL will...



Advocacy

We will work with elected leaders and public agencies to:

- Build awareness of the public benefits of converting schoolyards into community parks and increase federal funding for greening schoolyards.
- Ensure the Department of Education recognizes Green Schoolyards as a practical solution for reducing suspensions.
- Fortify the Environmental Protection Agency's recognition of Green Schoolyards as a practical solution to reducing sewer overflows and heat island impacts.
- Advocate Green Schoolyard funding be directed where it is needed most: in under-resourced school districts.

In the next 5 years TPL will...



Data and insight

Our research and innovation team will offer publicly available data:

- GIS mapping to pinpoint underserved neighborhoods that will benefit most from a Green Schoolyard program, turning complex data into actionable and relevant insights, and driving investments to low-income communities.
- Implement evaluation protocols to show that Green Schoolyards are a key contributor to community health, social equity, and climate resilience.

In the next 5 years TPL will...



Financing and leverage

We will work with local elected leaders and school districts to:

- Develop and advocate for ballot measures to unlock funding for Green Schoolyards.
- Develop and advocate for shared-use agreements to expand park access by making school district land available to the public.

In the next 5 years TPL will...

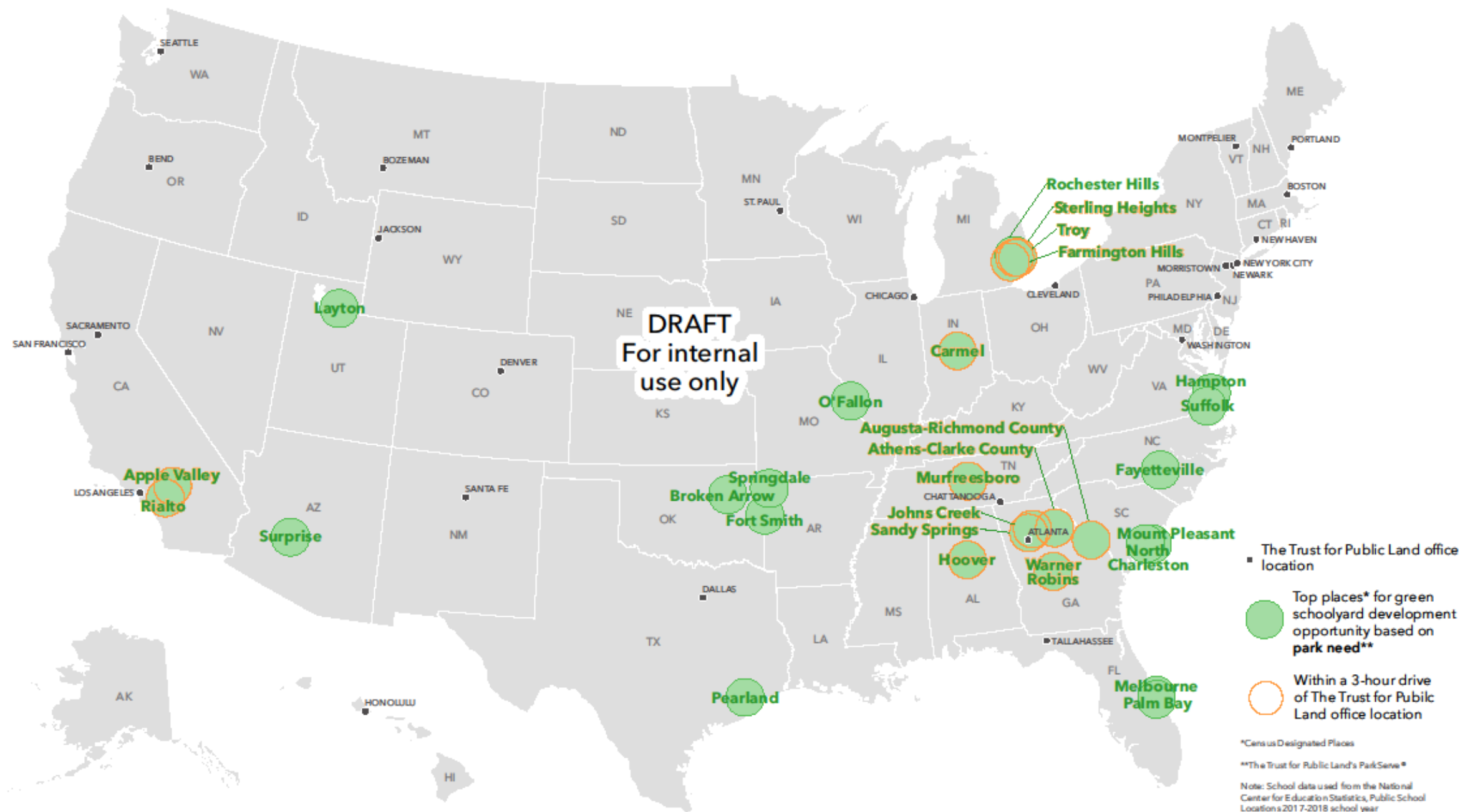


Park Development

We will work bring Green Schoolyard programs to 20 communities:

- Collaborate with national partners to forge collective impact models that quantifies the impact of Green Schoolyards on community health, equity, and climate resilience.
- The sustainable design community to develop public-facing best practice design standards for Green Schoolyards to maximize impact on community health, equity, and climate resilience.
- School districts to support their own capacity to implement Green Schoolyards through the distribution of resources and best practices.
- School communities to demonstrate evidence-based approaches to design that shift power, resources, and decision making to neighborhood communities; e.g. participatory design standards for the engagement and stewardship practices for maintaining the new schoolyard.

Where to go next?



ACCESS: SCHOOLYARDS AS PUBLIC GREENSPACE



CLIMATE: SCHOOLYARDS FOR COMMUNITY COOLING

One size does not fit all!

Recognizing that every city has unique resources and challenges, we will deploy Green Schoolyard programs to work in a variety of implementation tracks.

1. **Soup to Nuts** — Full scope, from site selection through stewardship.
2. **Inspire and Support** — Provide technical assistance to cities and school districts.
3. **Hybrid** — TPL to lean in as needed by local school districts.



Evaluation

Data will inform the development of best practice standards. Our field work will be a laboratory for increasing positive impact on communities.

- **Consistent measures of success** will track climate and health impacts.
- **Standard baseline data** will be collected for each project before and after.
- Green Schoolyard programs will be paired with **research institutions** to evaluate long term impacts.



William Dick School, Philadelphia

Evaluation

At the John Patterson School in Philadelphia, the principal noted that the **behavioral climate has changed because of the schoolyard, which opened January 5, 2018.**

Number of suspensions:

35 = 2016/2017

27 = 2017/through **opening**

0 = **opening** to last day of school 2018

0= 2018/2019

0= 2019 to date



William Dick School, Philadelphia

Impact

Call to Action

Join us to **reimagine and realize** the power of Green Schoolyards to create healthier and more resilient communities that move our society forward.

- **Imagine** what Green Schoolyards would mean in your community.
- Use your creative power to **inspire** positive change.
- **Advocate** for Joint Use Agreements.
- **Talk** to elected officials and School Districts in your community about the value of Green Schoolyards.



Lets **work together** to cultivate the next generation of Landscape Architects and make our communities healthier and climate-ready!

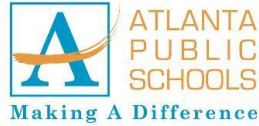


The McLean Contributionship



NFWF

The Otto Haas Charitable Trust



for the greener good



green schoolyards america



UNIVERSITY of WASHINGTON



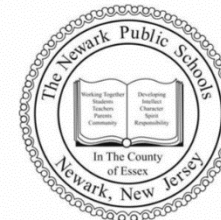
Parks, Recreation and Historic Preservation



The Charina Endowment Fund



HELLMAN FOUNDATION



Learning Objectives

- **Learning Objective # 1** - Understand the **broad scale of urban schoolyards**, the **complex patterns of ownership and authority**, and the varied **approaches to transforming blank schoolyards into green schoolyards**.
- **Learning Objective # 2** - Learn how **joint-use agreements** are created by cities and expanded by non-profits.
- **Learning Objective # 3-Experience** - the results of a **20-year partnership in New York that created over 200 green schoolyards**, and a complex partnership between 3 government agencies and a non-profit in Philadelphia.
- **Learning Objective # 4-** Understand how green schoolyard transformations are an important strategy for ensuring that all US city residents have a **high-quality park within a 10-minute walk**.

AIA Registered Provider

The American Society of Landscape Architects is a Registered Provider with The American Institute of Architects Continuing Education Systems. Credit earned on completion of this program will be reported to CES Records for AIA members. Certificates of Completion for both AIA members and non-AIA members are available upon request.

This program is registered with the AIA CES for continuing professional education. As such, it does not include content that may be deemed or construed to be an approval or endorsement by the AIA of any material of construction or any method or manner of handling, using, distributing, or dealing in any material or product.

Questions related to specific materials, methods, and services will be addressed at the conclusion of this presentation.

Copyright Materials

This presentation is protected by US and International Copyright laws. Reproduction, distribution, display and use of the presentation without written permission of the speaker is prohibited. © The American Society of Landscape Architects

Session Recording

This education session will be recorded and available online:

<http://www.asla.org/OnlineLearning.aspx>

Individuals can view these for a small fee and PDHs can be earned by passing a self-study exam.

Disclaimer

The views and opinions expressed by presenters are their own and do not necessarily represent those of ASLA. ASLA disclaims any responsibility for the use and application of information presented in this education session.

Q & A

ASLA
SAN2019

#ASLA2019

**Conference on
Landscape Architecture**
November 15-18
San Diego



THE
TRUST
FOR
PUBLIC
LAND