

MASC

Management of Acute
Supply during Crises

Table of Contents

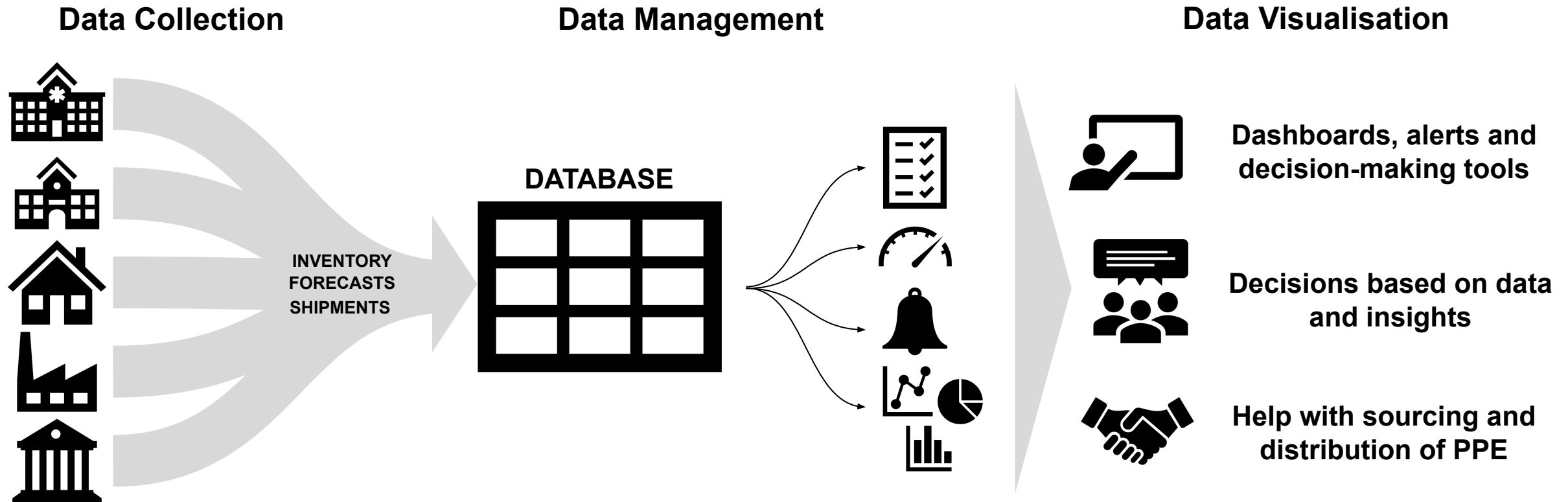
- 1 Challenge
- 2 Vision
- 3 Solution
- 4 MASC for Governments
- 5 MASC for Institutions
- 6 Design and Security
- 7 Pilot launch in Estonia
- 8 Value after the Crisis
- 9 MASC Team

Challenge

1. During COVID-19 crisis, **making informed decisions** on procurement and distribution of **personal protective equipment** (PPE) has been challenging
2. The difficulty in decision-making is mainly caused by the **lack of data** on PPE inventory, forecasts and usage across institutions in both public and private sector
3. Without the necessary tools, unforeseen crises such as COVID-19, can lead to **unstructured data collection** and analysis
4. Various needs at different levels can cause **overwhelming** reporting demands, **confusion** in reporting, and **fragmented** data management
5. Inefficient and overloaded processes contribute to **increased error rates on all levels**, from frontline reporting to strategic decision-making

Vision

Seamless **data flow** from institutions to the central **database** for effective **decision-making**



No central, automated platform across hundreds/thousands of organizations exists today

Solution

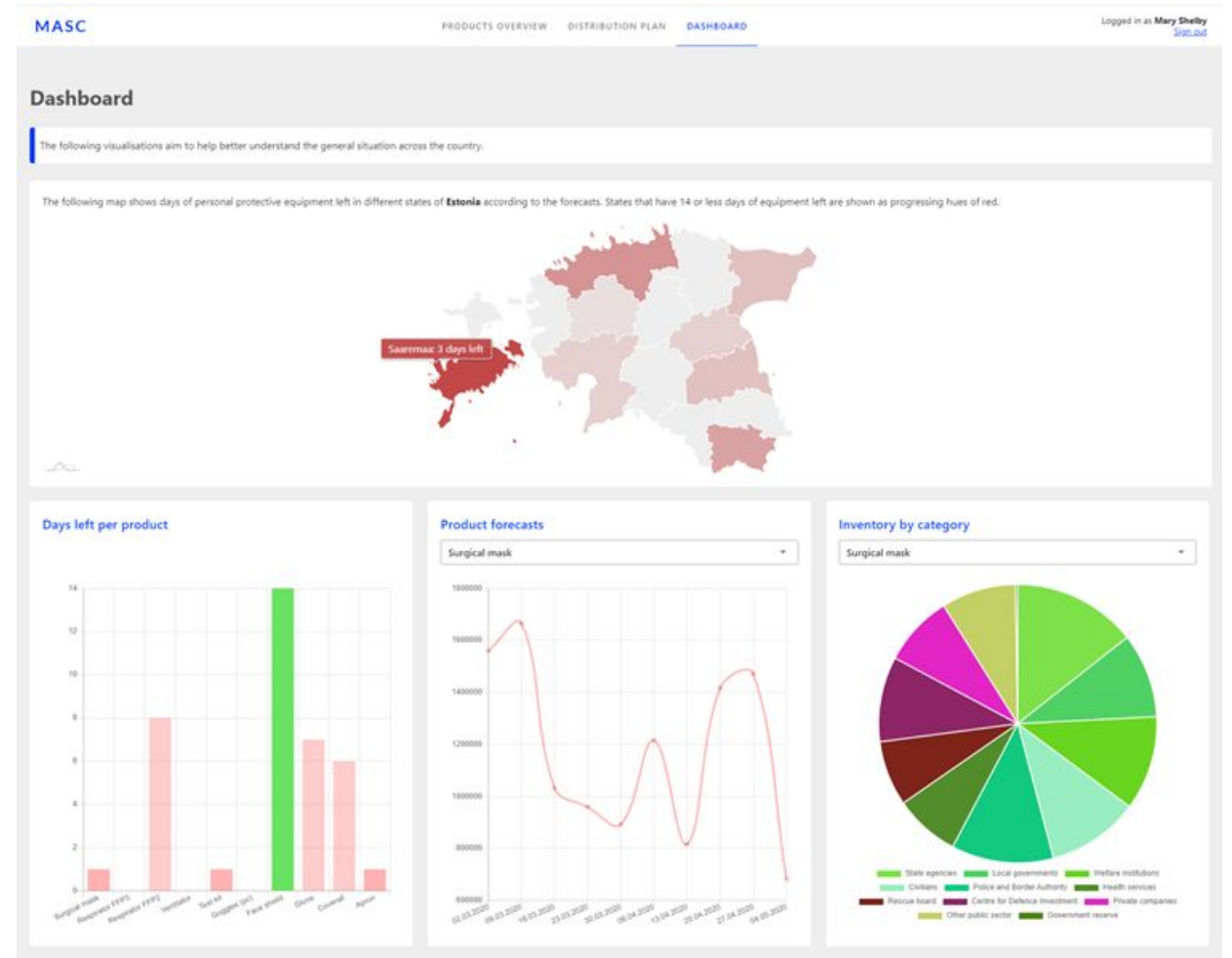
MASC is a **centralised platform** that allows national crisis response teams to have a **real time overview** of **stockpiles of PPE** in hospitals and other public sector institutions

MASC helps to make **informed decisions** on sourcing and distribution of **PPE**

[Website](#)

[Introductory video](#)

[Try our demo](#)



Key Benefits

MASC helps to bring **cohesion in data reporting** between various layers of the government



Increased reporting **accuracy** and data **security** adds trust in the system

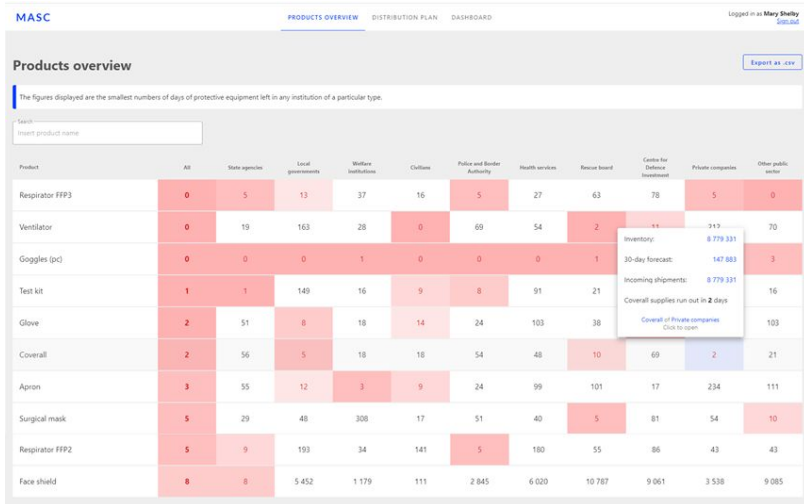


Optimised processes **free up time** for government and institutions to manage the crisis

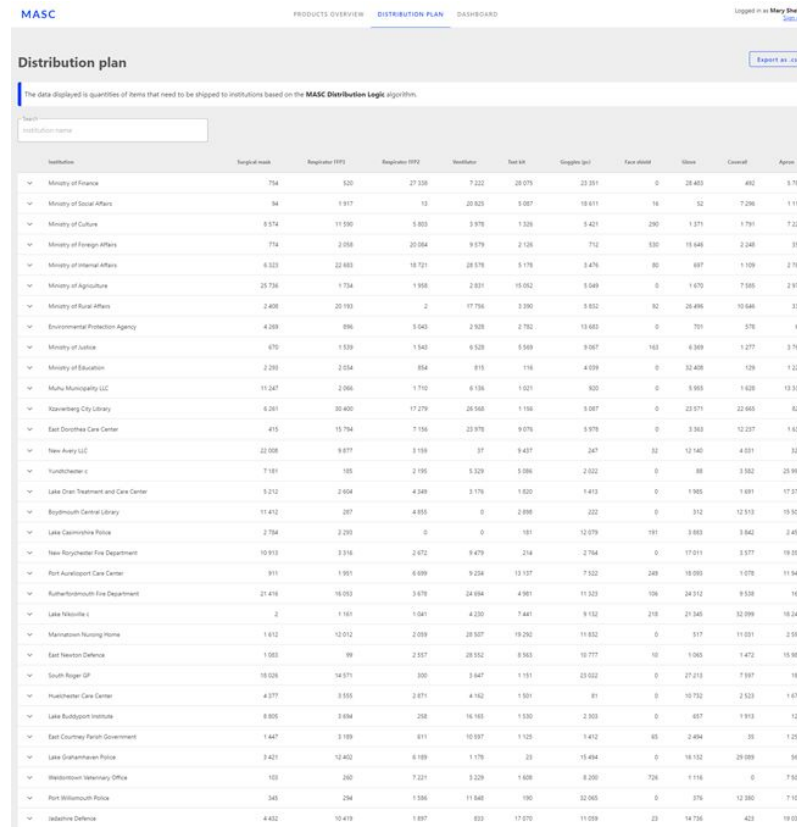


Government Views

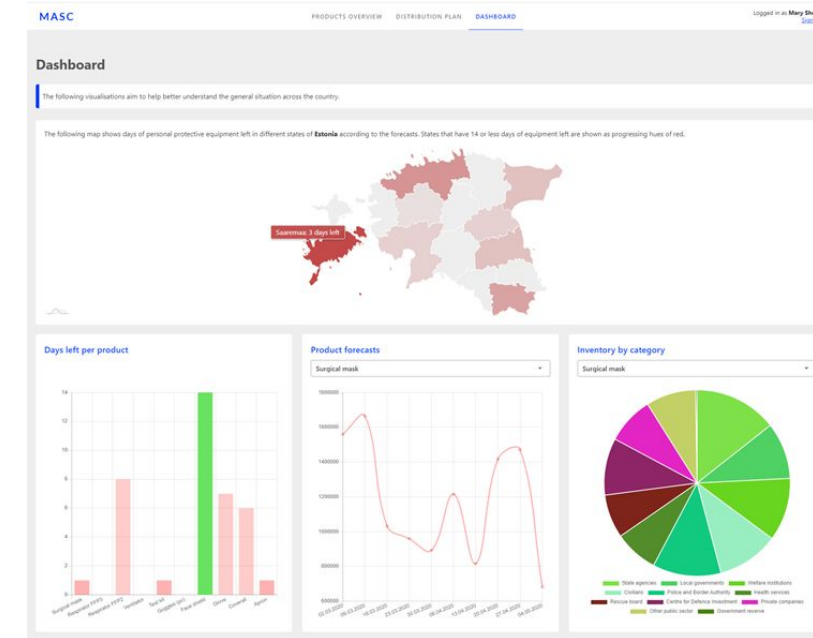
Control Center



Distribution Plan



Dashboards



based on the MASC Distribution Logic algorithm

Institution Views

Overview of Data

MASC Logged in as Mary Shelly

Muhu Municipality LLC
Inventory, forecast, and shipments

[Start updating](#)

Product	Inventory	30-day forecast	Incoming shipments
Surgical mask	488 829 pc	11 247 pc	488 829 pc
Respirator FFP3	207 475 pc	2 069 pc	207 475 pc
Respirator FFP2	211 751 pc	1 710 pc	211 751 pc
Ventilator	33 391 pc	6 136 pc	33 391 pc
Test kit	103 071 pc	1 021 pc	103 071 pc
Goggles (pc)	1 602 pc	920 pc	1 602 pc
Face shield	402 495 pc	0 pc	402 495 pc
Glove	184 479 pc	5 955 pc	184 479 pc
Coverall	84 106 pc	1 628 pc	84 106 pc
Apron	888 954 pc	12 238 pc	888 954 pc

Simple Data Updates

MASC Logged in as Mary Shelly

[Update inventory](#) [Update 30-day forecast](#) [Update incoming shipments](#)

Well done. Now, please enter your 30 day forecasts.
How many of each item will you spend in the next 30 days?

Product	Inventory	30-day forecast	Incoming shipments
Surgical mask	0 pc ✓ <small>previous amount: 488 829 pc</small>	<input type="text" value="30-day forecast: pc"/> <small>previous amount: 11 247 pc</small>	488 829 pc
Respirator FFP3	50 000 pc ✓ <small>previous amount: 207 475 pc</small>	<input type="text" value="30-day forecast: pc"/> <small>previous amount: 2 069 pc</small>	207 475 pc
Respirator FFP2	0 pc ✓ <small>previous amount: 211 751 pc</small>	<input type="text" value="30-day forecast: 150000 pc"/> <small>previous amount: 1 710 pc</small>	211 751 pc
Ventilator	100 000 pc ✓ <small>previous amount: 33 391 pc</small>	<input type="text" value="30-day forecast: pc"/> <small>previous amount: 6 136 pc</small>	33 391 pc
Test kit	0 pc ✓ <small>previous amount: 103 071 pc</small>	<input type="text" value="30-day forecast: pc"/> <small>previous amount: 1 021 pc</small>	103 071 pc
Goggles (pc)	0 pc ✓ <small>previous amount: 1 602 pc</small>	<input type="text" value="30-day forecast: 1000 pc"/> <small>previous amount: 920 pc</small>	1 602 pc
Face shield	0 pc ✓ <small>previous amount: 402 495 pc</small>	<input type="text" value="30-day forecast: pc"/> <small>previous amount: 0 pc</small>	402 495 pc
Glove	0 pc ✓ <small>previous amount: 184 479 pc</small>	<input type="text" value="30-day forecast: pc"/> <small>previous amount: 5 955 pc</small>	184 479 pc
Coverall	0 pc ✓ <small>previous amount: 84 106 pc</small>	<input type="text" value="30-day forecast: pc"/> <small>previous amount: 1 628 pc</small>	84 106 pc
Apron	0 pc ✓ <small>previous amount: 888 954 pc</small>	<input type="text" value="30-day forecast: pc"/> <small>previous amount: 12 238 pc</small>	888 954 pc

[Back](#) [Confirm](#)

Sending Comments

MASC Logged in as Mary Shelly

Muhu Municipality LLC

You're all set.

Additional comments

Thank you! Come back on Monday next week!

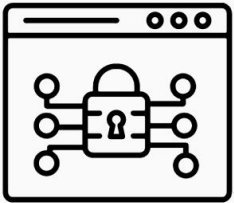
[Submit and return to Dashboard](#)

Built on powerful front-end design based on user feedback

Designed with Security and Scalability in Mind



Secure database solution



End-to-end encryption used



User verification

Piloted in Estonia

Estonia launched the pilot version of MASC on 21 April, today **used by over 300 institutions**



[Link to image source](#)

Global Readiness



MASC is **flexible** and **easily scalable**, able to fulfil a nation's different requirements for processes, application hosting, and APIs



Value After the Crisis

MASC provides **immediate relief** to the COVID-19 crisis and will help to make sure that **we are better prepared for the next crisis**

Routine data reporting and analysis allows **early intervention**, helping to **avoid the next global outbreak**

MASC **can be adapted** to any crisis situation, enabling to track relevant items **beyond PPE**



MASC Team



Kristian Sutt
Project Manager
Day to day:
Columbia/Cambridge Law



Sten-Erik Mägi
Project Manager
Day to day:
Shangri-La Group



Kert Pütsepp
Product Development
Day to day:
AstraZeneca



Oliver Viljamaa
Product Development
Day to day:
Transferwise



Otto Jaansoo
Design
Day to day:
Hable



Tõnis Palts
IT Development
Day to day:
Maagiline



Johannes Kunts
IT Development
Day to day:
Maagiline



Karl Erik Esko
Legal
Day to day:
RASK Attorneys-at-Law



Tuuli Maasikas
PR & Marketing
Day to day:
BBC Education

Contact us

Have questions? Want to work together? Anything else on your mind?

info@masc-global.com

