

HIGHLIGHTS

HOUSEHOLD MATERIALS

WALLS

In 2020 31% of wall materials were made of concrete, cement or brick, an increase from 18% in 2009. Traditional materials decreased from 58% in 2009 to 36% in 2020.

ROOF MATERIALS

In 2020 40% of roof materials were made of metal, an increase from 27% in 2009 in Santo Rural. Traditional materials decreased from 68% in 2009 to 56% in 2020.

HOUSEHOLD FACILITIES

DRINKING WATER

In 2020 47% of households drinking water came from a rainwater tank, an increase from 38% in 2009 in Santo Rural.

TOILET FACILITIES

In Santo Rural 65% of household's toilet facility was a pit latrine in 2020. Number of households with flush toilets has increased from 303 in 2009 to 579 in 2020.

HOUSEHOLD ENERGY

COOKING ENERGY

Open fires used for cooking decreased in Santo Rural from 98% in 2009 to 92% in 2020. There was an increase in using solar power with 4% using in 2020 from 0% in 2009.

SOURCE LIGHTING

In 2009 199 households used solar for their lighting in 2009, this increased to 7,128 in 2020.

DISASTER SUPPORT

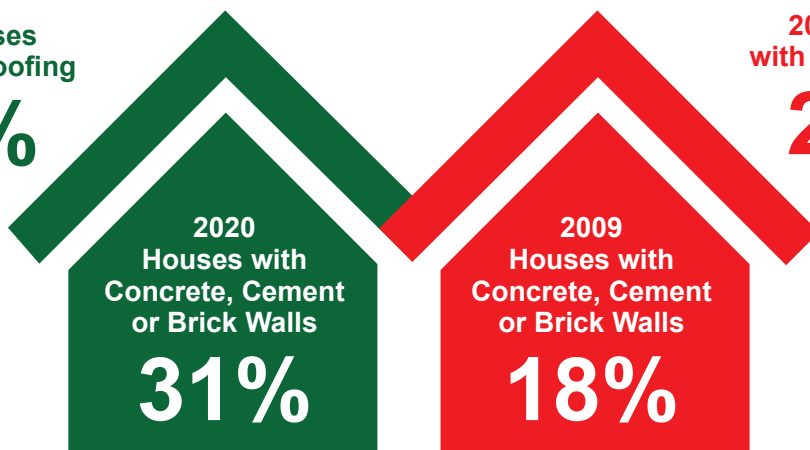
INFORMATION

In 2016 main sources of information for disasters were friends and relatives at 33%, SMS at 21%, and Radio at 16%.

HOUSEHOLD MATERIALS

2020 Houses with Metal Roofing

40%



2009 Houses with Metal Roofing

27%

WALL MATERIALS

In 2020 31% of wall materials were made of concrete, cement or brick, an increase from 18% in 2009. Traditional materials decreased from 58% in 2009 to 36% in 2020

NATIONAL					SANTO RURAL			
2020		2009			2020		2009	
21,808	34%	11,803	25%	Concrete, cement or brick	2,536	31%	969	18%
20,353	32%	20,290	43%	Traditional (bush) materials	2,954	36%	3,059	58%
13,067	21%	8,944	19%	Metal	509	6%	302	6%
4,544	7%	4,511	10%	Wood	1,359	17%	862	16%
63,365		47,373		Total Households	8,169		5,312	

ROOF MATERIALS

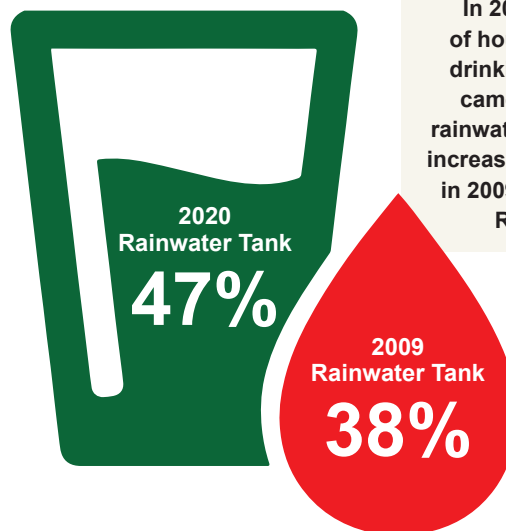
In 2020 40% of roof materials were made of metal, an increase from 27% in 2009 in Santo Rural. Traditional materials decreased from 68% in 2009 to 56% in 2020.

NATIONAL					SANTO RURAL			
2020		2009			2020		2009	
1,719	3%	1,386	3%	Concrete, cement or brick	141	2%	155	3%
25,221	40%	21,411	45%	Traditional (bush) materials	4,611	56%	3,591	68%
34,677	55%	22,806	48%	Metal	3,230	40%	1,417	27%
876	1%	483	1%	Wood	73	1%	73	1%
63,365		47,373		Total Households	8,169		5,312	

HOUSEHOLD FACILITIES
DRINKING WATER

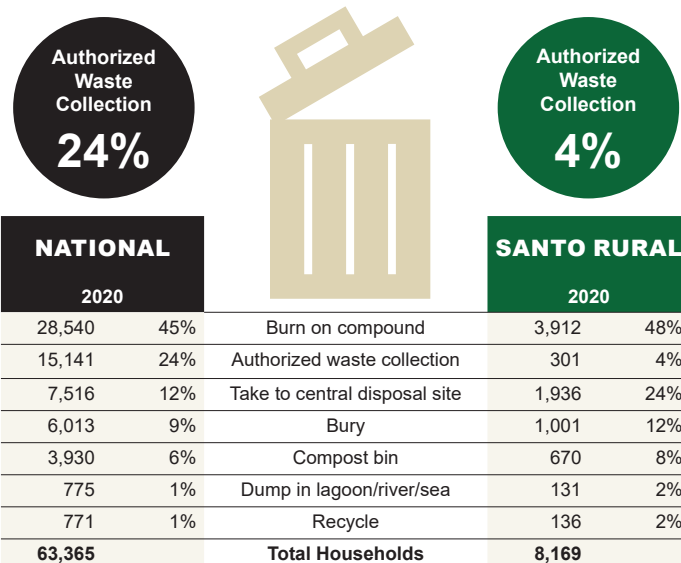
	NATIONAL			
	2020		2009	
Pipe	30,935	49%	21,963	46%
Well	5,136	8%	2,703	6%
Rainwater Tank	22,350	35%	16,255	34%
River, Lake	3,751	6%	4,994	44%
Total Households	63,365		47,373	

	SANTO RURAL			
	2020		2009	
Pipe	2,532	31%	1,837	35%
Well	493	6%	136	3%
Rainwater Tank	3,808	47%	2,032	38%
River, Lake	1,202	15%	1,177	22%
Total Households	8,169		5,312	


WASHING WATER

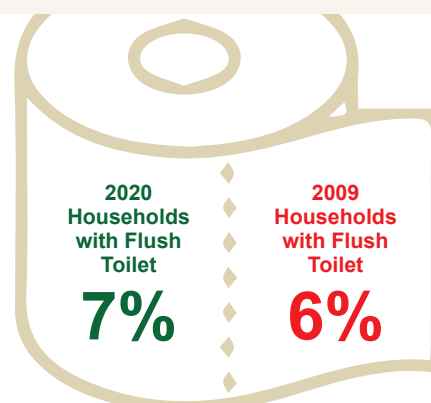
	NATIONAL			
	2020		2009	
Pipe	38,546	61%	24,157	51%
Well	7,693	12%	4,852	10%
Rainwater Tank	8,075	13%	7,979	17%
River, Lake	8,639	14%	9,525	20%
Total Households	63,365		47,373	

	SANTO RURAL			
	2020		2009	
Pipe	3,664	45%	2,220	42%
Well	968	12%	272	5%
Rainwater Tank	1,250	15%	791	15%
River, Lake	2,209	27%	1,957	37%
Total Households	8,169		5,312	

RUBBISH DISPOSAL

TOILET FACILITIES

In Santo Rural 65% of household's toilet facility was a pit latrine in 2020. Number of households with flush toilets has increased from 303 in 2009 to 579 in 2020.

NATIONAL				SANTO RURAL				
2020		2009		2020		2009		
29,822	47%	22,387	47%	Pit latrine	5,293	65%	3,287	62%
10,784	17%	10,551	22%	Ventilated Pit latrine	1,534	19%	1,293	24%
15,166	24%	9,953	21%	Flush Toilet	579	7%	303	6%
7,535	12%	4,118	9%	Water Sealed	163	2%	397	7%
63,365		47,373		Total Households	8,169		5,312	



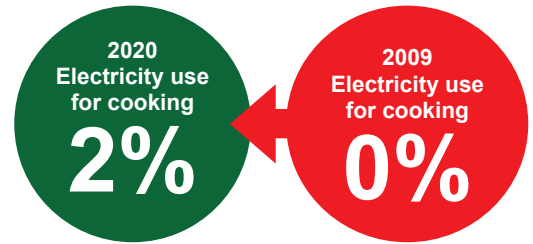
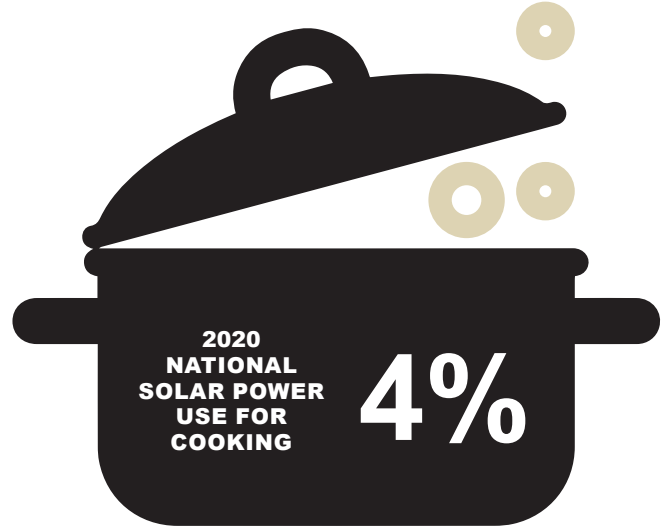
HOUSEHOLD ENERGY

COOKING ENERGY

Open fires used for cooking decreased in Santo Rural from 98% in 2009 to 92% in 2020. There was an increase in using solar power with 4% using in 2020 from 0% in 2009.

	NATIONAL			
	2020		2009	
Electricity	3,755	6%	461	1%
Open fire (wood, coconut shells)	47,390	75%	40,364	85%
Charcoal	444	1%	491	1%
Bottled gas	7,576	12%	5,926	13%
Solar power	2,703	4%	N/A	N/A
Total Households	63,365		47,373	

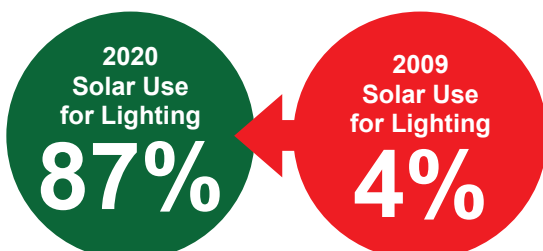
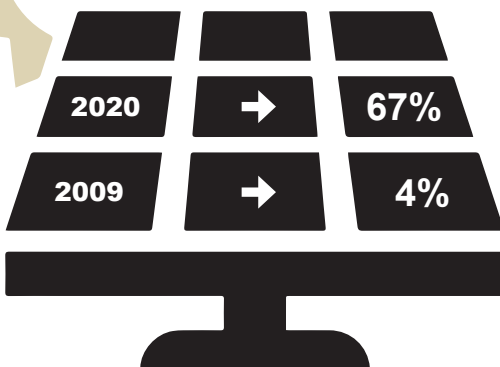
	SANTO RURAL			
	2020		2009	
Electricity	123	2%	6	0%
Open fire (wood, coconut shells)	7,508	92%	5,182	98%
Charcoal	4	0%	1	0%
Bottled gas	192	2%	112	2%
Solar power	326	4%	N/A	N/A
Total Households	8,169		5,312	



SOURCE OF LIGHTING

NATIONAL
SOLAR POWER
USE FOR
LIGHTING

In 2009 199 households used solar for their lighting in 2009, this increased to 7,128 in 2020.



	NATIONAL			
	2020		2009	
Solar	42,668	67%	1,671	4%
Electricity	19,359	31%	14,100	30%
Battery	731	1%	3,360	7%
Candles	218	0%	2,168	5%
Kerosene			22,897	48%
Total Households	63,365		47,373	

	SANTO RURAL			
	2020		2009	
Solar	7,128	87%	199	4%
Electricity	894	11%	720	14%
Battery	88	1%	245	5%
Candles	21	0%	188	4%
Kerosene			3,546	67%
Total Households	8,169		5,312	

DISASTER SUPPORT

INFORMATION SOURCE FOR DISASTERS

In 2016 main sources of information for disasters were friends and relatives at 33%, SMS at 21%, and Radio at 16%.

	NATIONAL 2016		SANTO RURAL 2016	
Radio	27,946	18%	2,409	16%
SMS	33,841	22%	3,211	21%
Phone call	30,860	20%	2,809	18%
TV	3,776	2%	76	0%
Internet/social media	4,429	3%	221	1%
Newspaper	3,025	2%	202	1%
Friends/relatives	35,872	24%	4,976	33%
Traditional knowledge	8,312	5%	1,252	8%
None	614	0%	121	1%
Total	151,697		15,290	

DISASTER RELIEF

NATIONAL 2016

Total number households

55,285

Received
disaster support

59%

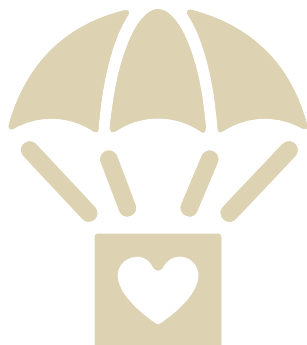
32,636

Has received disaster support

DISASTER RELIEF IN KIND

Received
Food

31,643



Received
Food

6

NATIONAL

2016

18,528

31,643

8,191

12,713

9,177

6,742

11,633

75

1,010

391

Building materials/tarpaulin

Food

Water

Planting materials/seeds

Clothing

Medical supplies/medicine

Tools/machinery/equipment

Transportation

Livestock

Money

SANTO RURAL

2016

27

11

6

20

18

3

15

0

0

0

SANTO RURAL 2016

Total number households

6,683

Received
disaster support

1%

48

Has received disaster support

POLICY RECOMMENDATIONS