

# SHIBUYA

## Japan's No.1 Innovation Hub

Yoshiro Tasaka, Director  
Shibuya Startup Support



# AT GRANCE

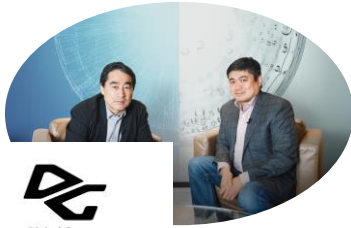
## Shibuya City is ...

- A ward of Tokyo Metropolitan Gov.
- famous for Shibuya Crossing
- Center for Culture, music, fashion, art and young people
- Shibuya Station is the world #2 station where 3.3 million people use daily.
- Shibuya is the first local government in Japan which started providing a marriage certificate to LGBTQ community
- Shibuya has the largest park in Tokyo, Yoyogi Park.
- Known as a center for creative industry



GMO  
INTERNET GROUP

CyberAgent.



DeNA

mixi



+100

Japanese tech giants  
(IPO companies)

20  
mins

Access to top Universities

# of Startup  
2000

200 Deep Tech企業数



100 +

# of co-working spaces

SHIBUYA

The Best Startup Ecosystem city in Japan

Spotify Google stripe shopify

snyk material bank Wolt

Tech Giants from oversea

10 +

60

# of VCs

BIG Bonds Investment Group

UB VENTURES

SAIL BEYOND

Creww

PLUGANDPLAY

# of Accelerators

10

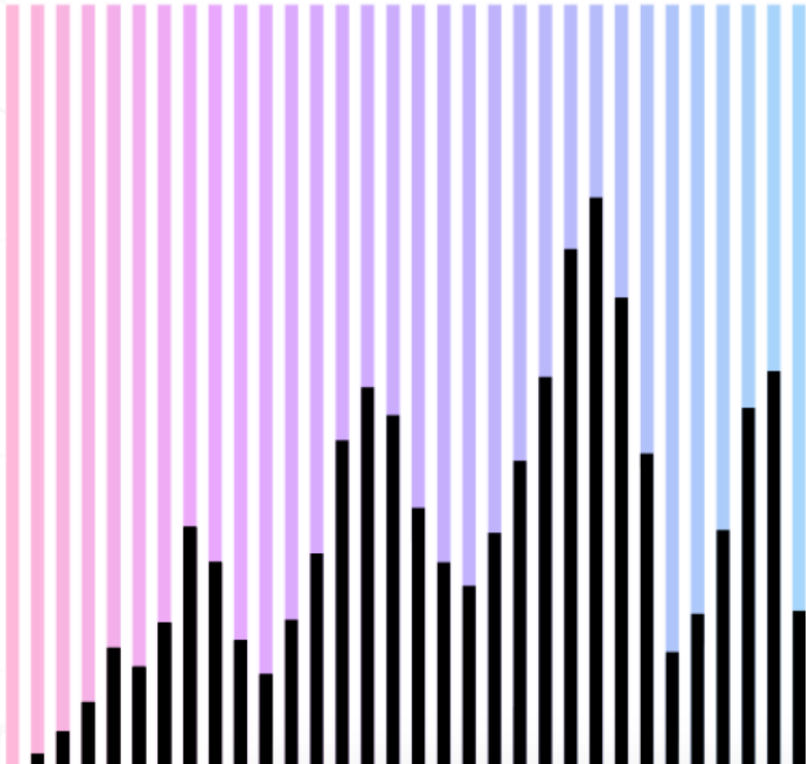
# **Building a foundation for innovation**

Shibuya City is creating a foundation of innovation by collecting data, educating residence about digital devices, and bringing innovative talents and investment.

Collecting Data and make it open to public



SHIBUYACO - CREATIONHUBSHIBUYACO - C



≡  
≡  
≡  
MENU

# SHIBUYA CO-CREATION HUB

ver 1.0

A platform that provide Shibuya's data  
and make everyone think about actions  
which make Shibuya more vibrant!

## Educating elderly and children



Not just providing digital education but also collecting data



## Building Ecosystem

### Ecosystem:

Building a startup friendly environment with a consortium of **100+ corporations**. Subcommittees are established with partner companies for each issue regarding startup.

The following services are created by the consortium;

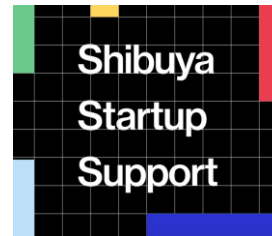
- **Opening a corporate account at a bank: 1 week**
- **Office Movie-in/out smoothly guideline**
- **Startup-Corporations matching**
- **Shibuya Startup University (entrepreneurship education program)**

### Delegation:

Shibuya is applying to get the special district status. Currently we are aiming to get Web3 special regulations/startup visa regulations

### DE&I:

From June to July of FY2022, "Amelias," a women's entrepreneurship support program by Airi Horie, who developed Silicon Valley's first women-specific acceleration program was held.



## Internationalization

### Start-up visa Program:

**500+** Inquires about our visa program annually. Granted to **21 companies** (as of Sept 2022).

We help foreign founders for their housing, banking, getting credit cards and etc.

We also help the founders to connect with Japanese big enterprises/VCs.

In Nov, we will launch a **global startup media to** inform the world about the Japanese startup scene.

This year, we are launching a **accelerator** jointly with big enterprises to support foreign startups in Japan.

Launched an office space for domestic and international startups in Shibuya.

**Hosting a tour for foreign investors**



## Proof of Concept in Shibuya

### PoC with us:

Over **200** startups have applied since its launch in June 2020. over **40** companies were selected. **2 of** them implemented.

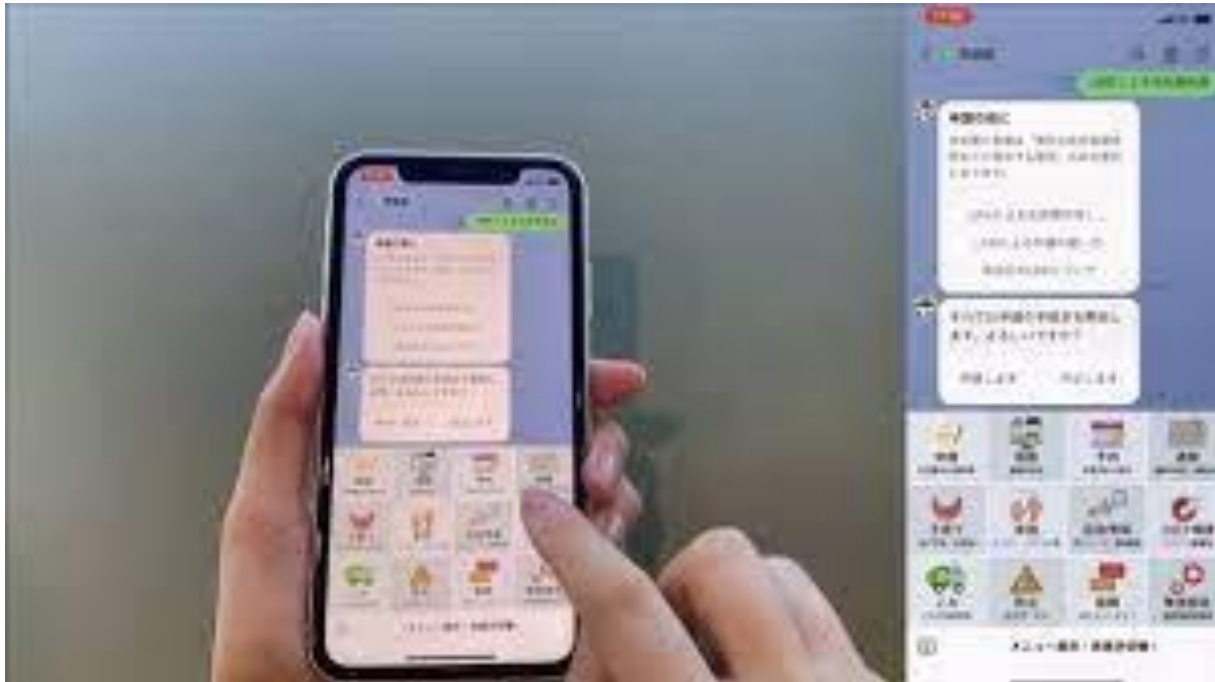
800+ Shibuya residents have already registered as testers, making it easy to conduct B-to-C PoC.

In addition to government offices, PoC are being conducted in various locations with the cooperation of large local companies. (Ward office, nursery schools, in front of Shibuya station, Miyashita Park, etc.)

Genres include MaaS, Art, Welfare, Childcare, Education, Crime Prevention, Fashion, Senior Employment, GovTech and others.

Cooperation with METI and other local governments

## Order documents by smartphone

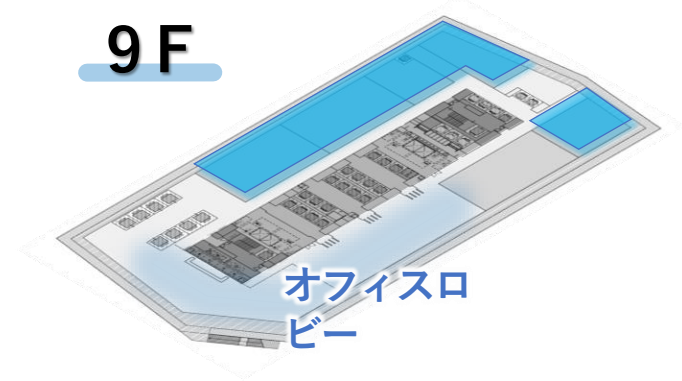


Residence can obtain documents through app.  
The City collects data and takes survey about public service through the app

In 2029 Open Innovation Lab will open

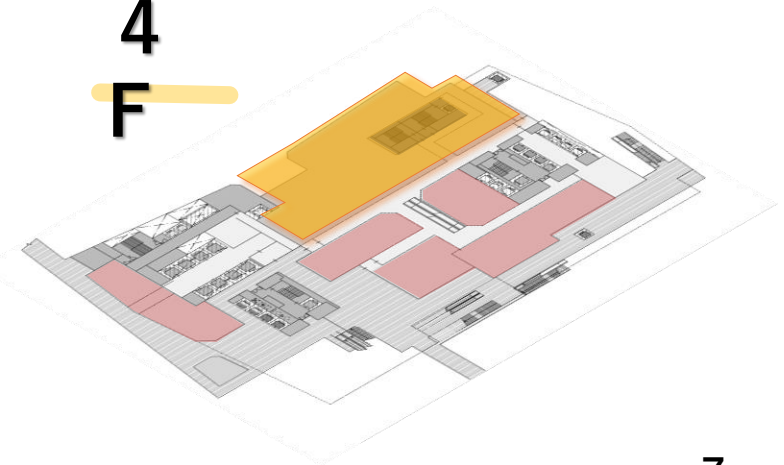


9F



計約2000m<sup>2</sup>

4F



# Please contact me if you have question!

Yoshiro Tasaka  
Director, SHIBUYA STARTUP SUPPORT@  
SHIBUYA CITY OFFICE

My email: [tasaka-y@shibuya.tokyo](mailto:tasaka-y@shibuya.tokyo)



SSS website



Yoshiro Tasaka  
Linkedin