

# Nafath App



# We Will Increase Our Investments In Technology Sector, And Lead The Digital Economy

Saudi Vision-2030

Growing Digital  
Economy

Renewable  
Digital  
Innovation

Smart e-  
Government

Effective  
Digital  
Services

Smooth and Reliable  
Digital Transactions

# A journey in Digital Saudi





# Challenges and Obstacles Facing Digital Services

Non-exhaustive Examples

## Traditional Verification Techniques

Entities employ basic and traditional methods to verify individuals' identities within digital services, which prevents the attainment of the highest levels of security and reliability

## User Distraction

The necessity for users to submit their personal information into service providers' platforms, and the need to create and retain unique passwords for each platform, leads to user distraction, password loss, and data being more exposed to exploitation

## Dependency on Self-service Kiosks

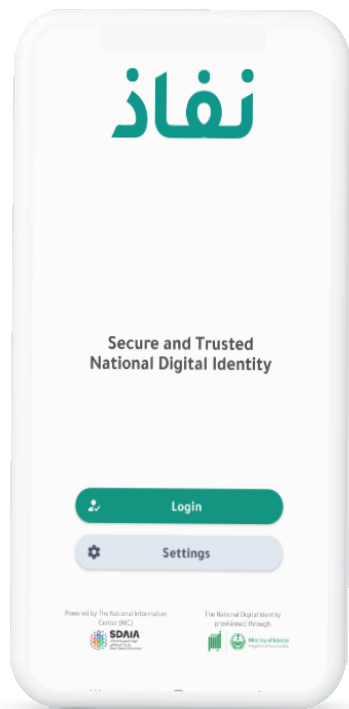
Reliance on self-service kiosks to verify the individual's identities in services that require biometric verification, despite the high cost of providing and maintaining them, in addition to its limited numbers compared to the growing demand for it

## Identity Theft

With the virtual nature of digital services that do not require the individual to meet the service provider directly, the likelihood of manipulation, gaining and abusing a person's login information increases, Resulting in fraudulent activities

## How Can it be Avoided?

The digitization of critical and sensitive services necessitates the development of tools and mechanisms that contribute to overcoming current challenges and enhancing transaction reliability. To that end, work has been done to develop a unified national application for safe and reliable authentication (Nafath).



## Nafath App

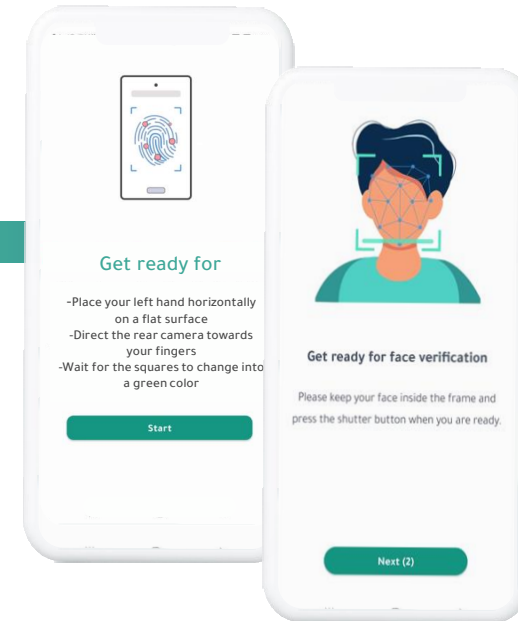
A national application developed by the National Information Center in the Saudi Data and Artificial Intelligence Authority. Aiming to enable government and private entities to verify the individuals' identities using their biometrics; In order to benefit from the services provided by the entities in a safe and reliable manner

# The Intrinsic Value of Nafath Comes From the App Advanced Techniques and Comprehensiveness, Where it Can Replace Existing Methods of Authenticating the Identities of Individuals who Benefit From Services Provided by Governmental And Private Entities



## Traditional Mechanisms

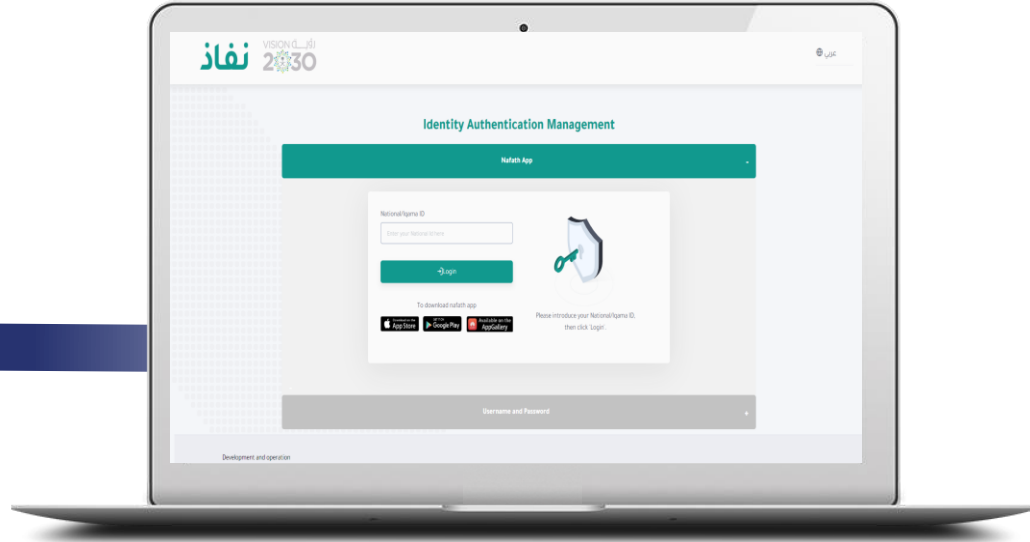
Relying on traditional methods to verify people's identities, such as manual verification through the ID card or through self-service Kisoks



## Nafath App

Employing AI-based advanced mechanisms to verify individuals' identities by using the camera of their smartphones to capture their biometrics and match it with national databases

# Nafath App is a Continuation of the Nafath Platform's Previous Achievements and it Contributes to Increasing the Trustworthiness of Digital Transactions



**Nafath Platform**



In the most visited government websites in the Kingdom for the years 2021 and 2022



**+22.1 Million**

Active users on the Platform

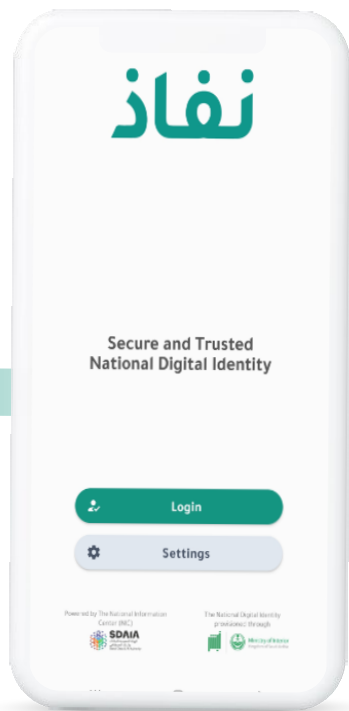
**+470**

Integrated platforms and applications

**+1.6 Billion**

Sign-on Requests

# The Nafath App Also Showed Significant Growth Soon After its First Launch, and Achieved Several Tangible Achievements at the National Level



**Nafath App**



In the most downloaded applications in the Kingdom for the year 2022



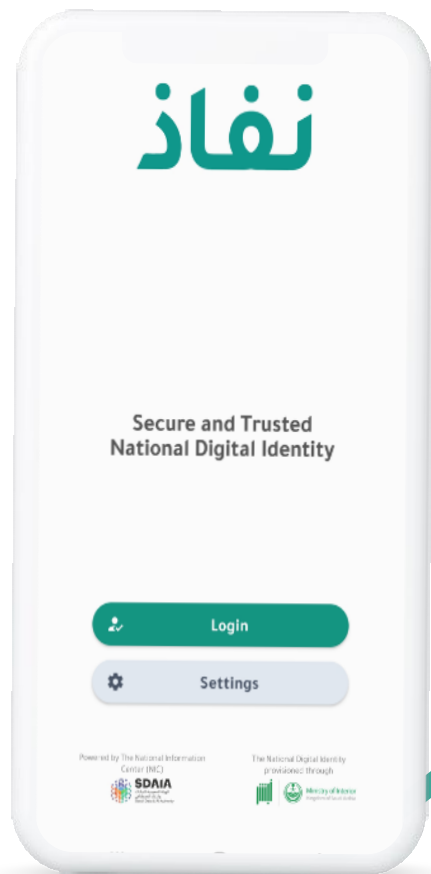
**+380 Million**  
Verification Requests

**+17.2 Million**  
Users download the application

**+470**  
Integrated platforms and applications



# What is the Added Value of Nafath App?



## Highest Levels of Reliability

Ensuring the use of centralized verification of individual's biometrics; to enable reliable verification in critical digital services



## Advanced Technologies

Uses recent state-of-the-art biometric recognition algorithms and AI-based liveness check algorithms.



## Customization

Various authentication levels aligned with the service's sensitivity level.



## Elasticity & Versatility

Dynamic Verification factors based on service type.



## Comprehensiveness

Boundless scope, extending to serve different individuals & sectors in the Kingdom of Saudi Arabia.



## Simplicity & Convenience

Contribute to enhancing lifestyle by creating a convenient user experience

## Advanced Technologies

Utilizing artificial intelligence algorithms to verify various biometrics features; contributing to the reduction of plagiarism and repudiation

The AI-based Algorithms Allow Advanced Recognition of Biometrics Through:



Face Recognition Algorithms



Fingerprint Recognition Algorithms

\_\_\_\_\_ Liveness Check algorithms are also used to enable detection of: \_\_\_\_\_

Using a **face mask** that match another person's features

Using a **recorded video or photo** instead of a live verification

Taking a **Picture** of a Sleeping or Unconscious Person's Face

## Highest Levels of Reliability

Ensuring secure and reliable verification of individuals' identity, by enabling centralized verification of people's biometrics in critical digital services

The central verification of biometric features place Nafath app in a leading competitive position, as it contributes to



Supporting the digitization of **critical services** that require a high level of reliability and security



Verification of identity using **more than one** biometric feature (Face and Fingerprint)

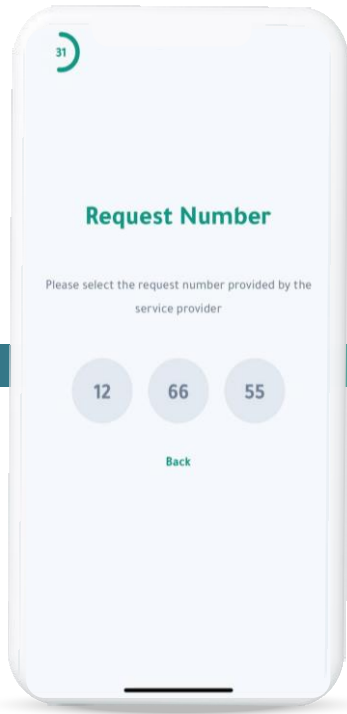


Enabling the **central** matching of individuals' biometric features with records stored in **the National Information Center databases**

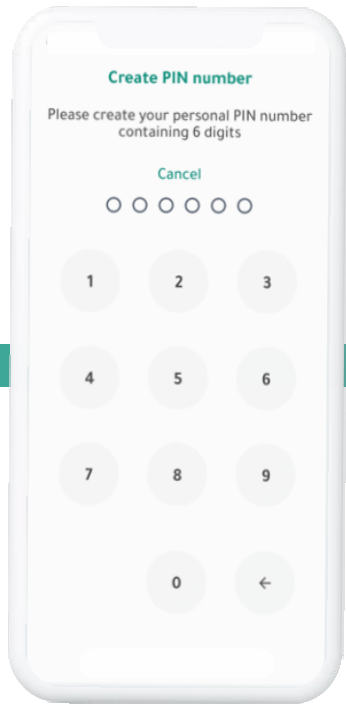
# The Application is Designed in a Dynamic Way that Enables the Use of One or More Verification Factors and Switching Between Them Without the Need for Any Further Development on the Application; This is to Enable Massive Support of Various Use Cases



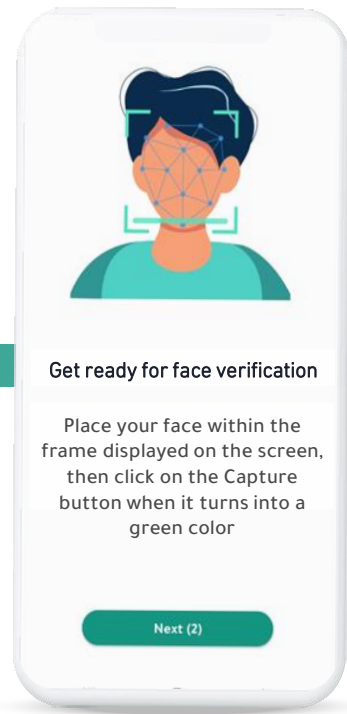
Local Authentication



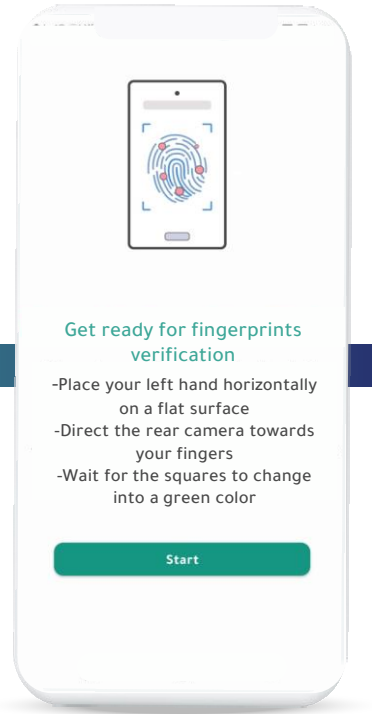
Authentication Via Request Number



Authentication Via PIN Code



Central Authentication Via Facial Recognition



Central Authentication Via Fingers Print<sup>1</sup>



# Customization

Supports 3 levels of authentication, based on service's sensitivity level

Level of Service Sensitivity	Level of Authentication	Authentication Factors
<p style="writing-mode: vertical-rl; transform: rotate(180deg);"><b>High</b></p>	<p><b>High</b> level of authentication, used for high sensitive transactions</p>	<p>Local Authentication + PIN Code + Request Number + Central Authentication of biometrics</p>
<p style="writing-mode: vertical-rl; transform: rotate(180deg);"><b>Moderate</b></p>	<p><b>Moderate</b> level of authentication, used for moderate sensitive transactions</p>	<p>Local Authentication + PIN Code + Request Number</p>
<p style="writing-mode: vertical-rl; transform: rotate(180deg);"><b>Low</b></p>	<p><b>Low</b> level of authentication, used for less sensitive transactions</p>	<p>Local Authentication + PIN Code or Request Number</p>



## Simplicity & Convenience

Contributing to the improvement of quality of life, by creating a smooth and comfortable user experience

Where the application showed excellent performance

Estimated at:

**470 Platforms/Applications'**

Services can be accessed through a unified access point

**20 Seconds<sup>1</sup>**

The average time needed to complete a request

**1 minute<sup>1</sup>**

The average time needed to activate the app



# Comprehensiveness

**Wide range of services, and boundless scope, extending to serve different individuals & sectors in the Kingdom of Saudi Arabia**

**The impact of the application extends on a broad scale**

**To enable the serving of:**

## Entitles

Developing advanced authentication mechanisms that contribute to enhancing the digitalization of entities' services.



Public Entitles



Private Entitles



Non-profit Entitles

## Individuals

Enabling individuals in the Kingdom to accept various authentication requests digitally through a unified access point



Citizens



Residents

# The Added Value of Nafath App Contributes to Achieving Tangible Impacts at the National Level



## Security Impact

Promoting the concept of safe country and supporting security efforts in reducing crimes and abuses



## Social Impact

Improving the quality of life and creating an accessible experience suited for all society segments



## Financial Impact

Raising expenditure efficiency and generating revenues & savings at the individuals and entities levels



## Technological Impact

Enabling the Kingdom to be a global leader in digital verification services and contributing to supporting the digital transformation





# The Added Value of the Application Comes From its Unique Features that Serve Multiple Use Cases, and Allow Identity Verification with the Highest Level of Reliability



## Central Point for Accepting Requests

A centralized feature provides a secure and reliable single point, allowing individuals to accept requests received from both governmental and private sectors' apps and platforms.



## Portable Self-Service Kiosks

An advanced feature that turns the mobile-phone into a self-service kiosk for biometrics verification, enabling individuals to digitally prove their identities.



## On-Site Verification<sup>1</sup>

A unique feature that ensures the completion of identity verification process within a specific location. Which contributes to facilitating the registration procedures at event sites, ports, and other facilities.

# To enable a comprehensive solution for fast and secure authentication

# Thank You