

Proactive Assignment of Social Benefits in Azerbaijan

Key Characteristics:

Digital Innovation

Integrates digital technology for administrative efficiency

Proactive Enrollment

Automatically identifies and enrolls eligible individuals

Adaptive System

Evolves based on continuous data analysis

Continuous progress

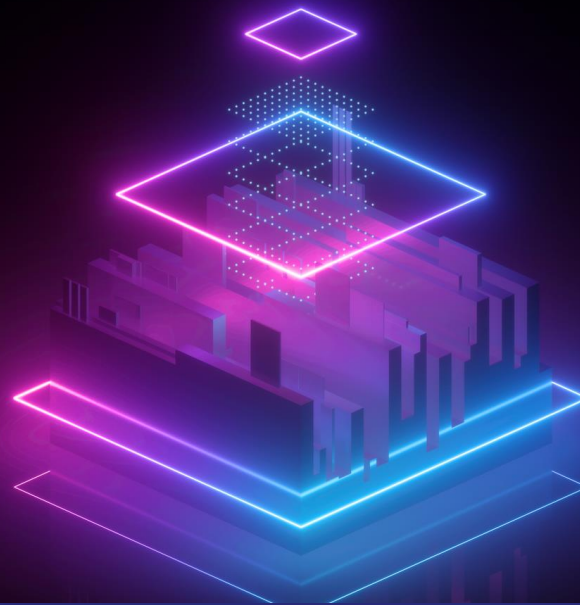
Uses feedback for system refinement

Efficient Coverage

Ensures fast, comprehensive service to all eligible persons

Proactive Assignment

is a streamlined system that uses data from state agencies to automatically identify and enroll individuals for social benefits. It eliminates the need for people to apply, ensuring efficient delivery of services to eligible recipients, particularly those who might otherwise miss out due to lack of access or awareness. This approach enhances inclusivity and operational efficiency in service provision.



**Launched in
2019**

**As of December 2023,
49 out of 51 types of social
allowances and stipends are
proactively assigned to
citizens.**

Azərbaycan Respublikası
Əmək və Əhəlinin
Sosial Müdafiəsi Nazirliyi

Dövlət
Müdafiə
Fondu



**PROACTIVE
ASSIGNMENT**